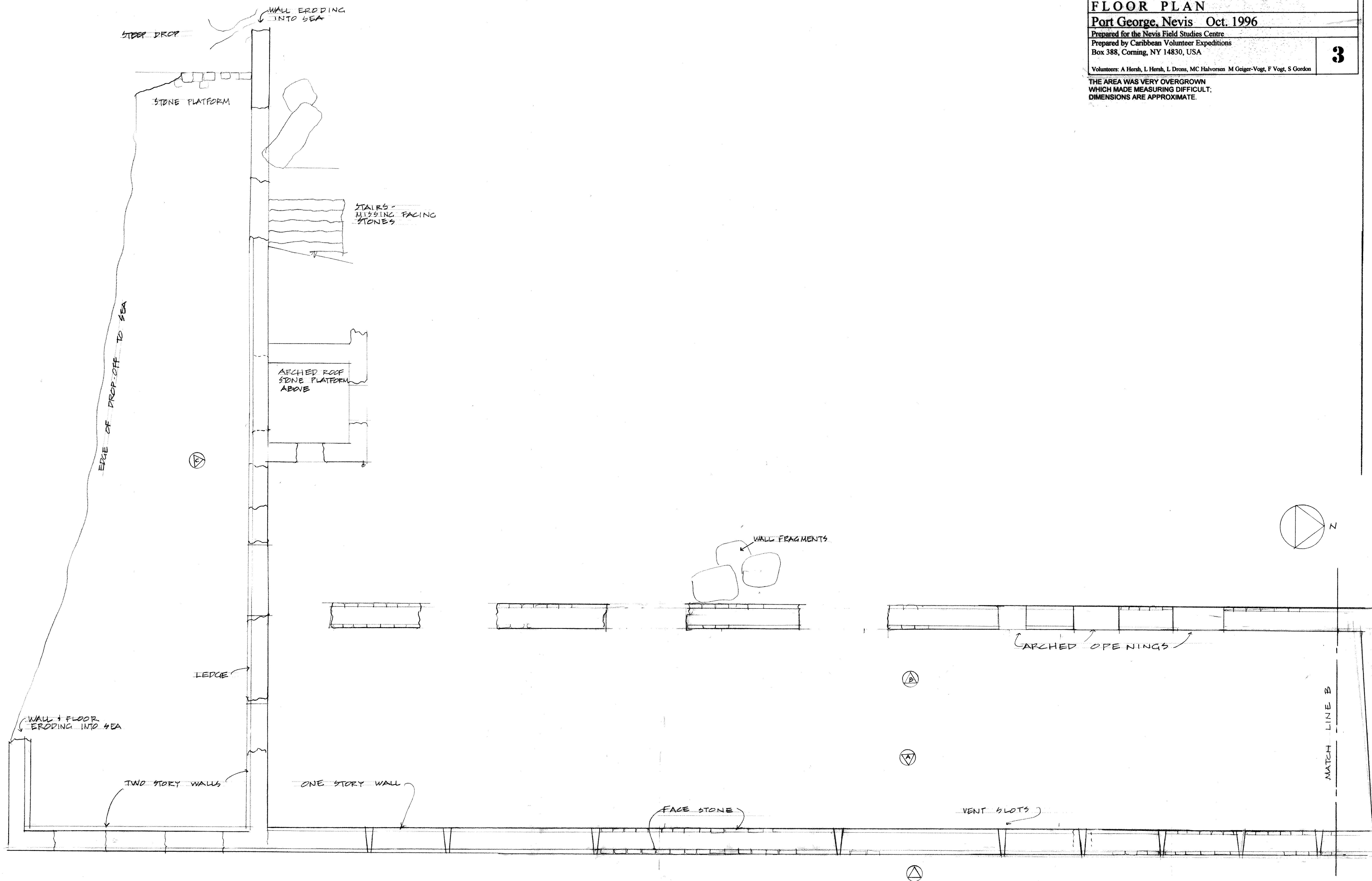
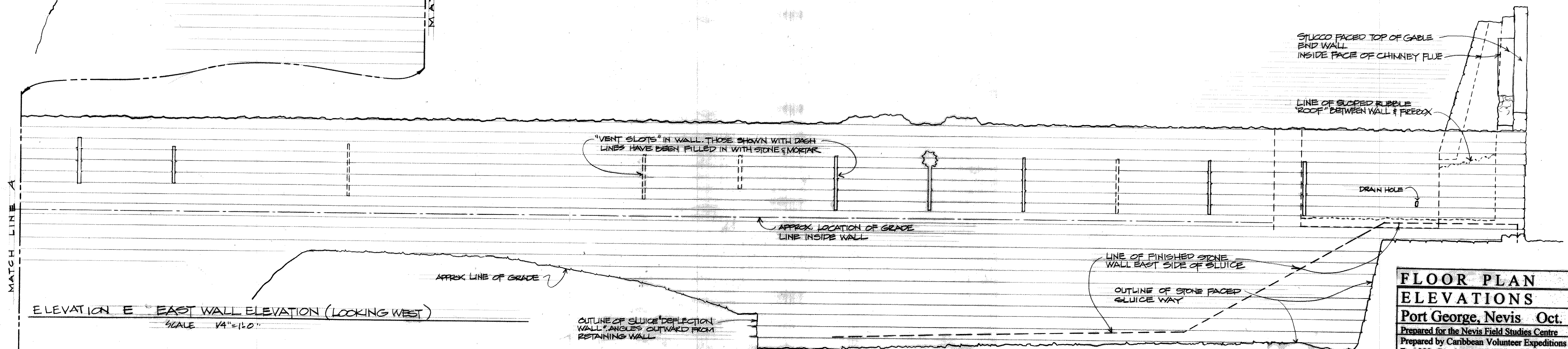
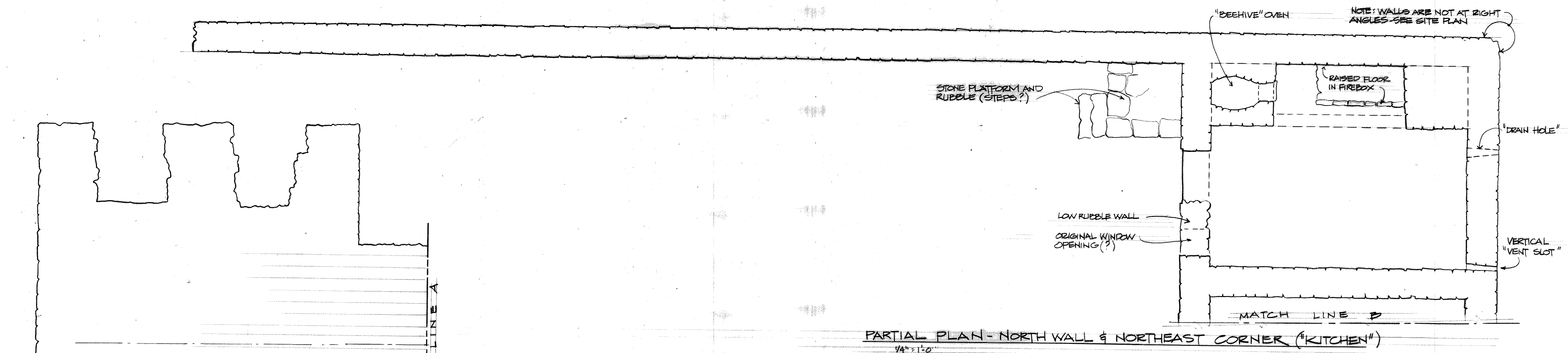
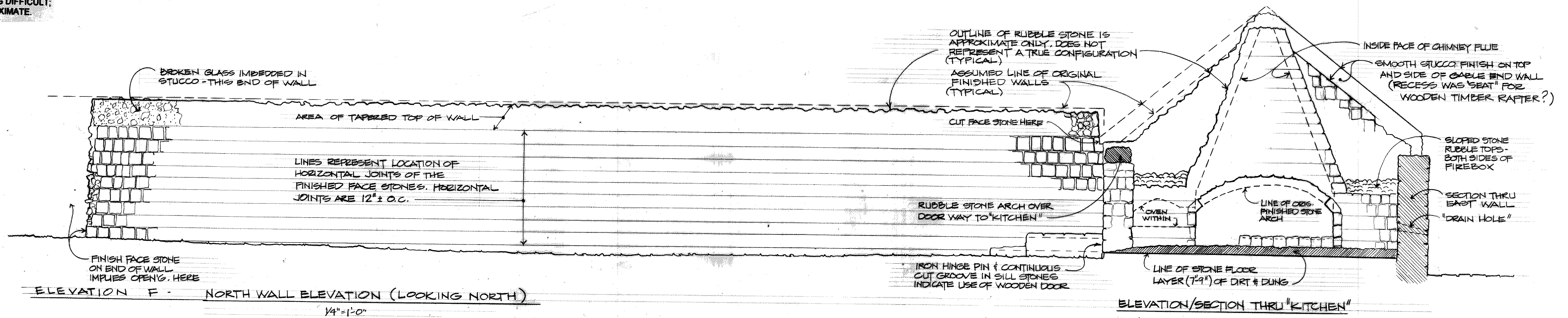


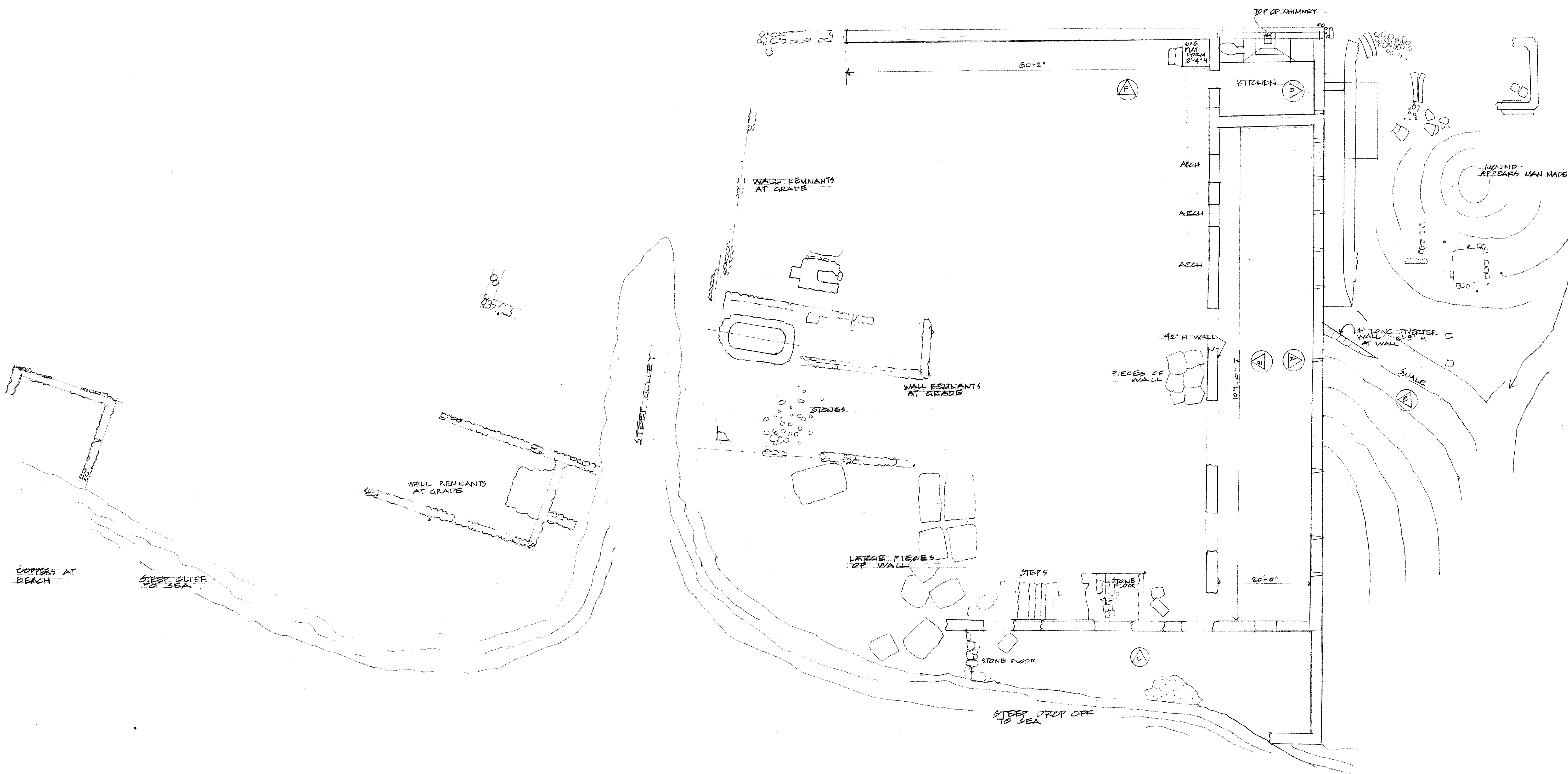
THE AREA WAS VERY OVERGROWN  
WHICH MADE MEASURING DIFFICULT;  
DIMENSIONS ARE APPROXIMATE.





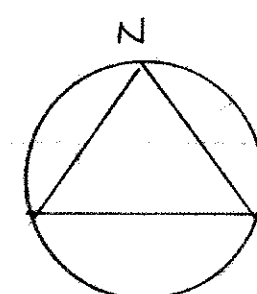
THE AREA WAS VERY OVERGROWN  
WHICH MADE MEASURING DIFFICULT.  
DIMENSIONS ARE APPROXIMATE





SITE PLAN  
SCALE 1" = 10'-0"

THE AREA WAS VERY OVERGROWN  
WHICH MADE MEASURING DIFFICULT;  
DIMENSIONS ARE APPROXIMATE



SITE PLAN  
Port George, Nevis Oct. 1996

Prepared for the Nevis Field Studies Centre  
Prepared by Caribbean Volunteer Expeditions  
Box 388, Corning, NY 14830, USA

Volunteers: A Hersh, L Hersh, L Drons, MC Halvorsen M Geiger-Vogt, F Vogt, S Gordon