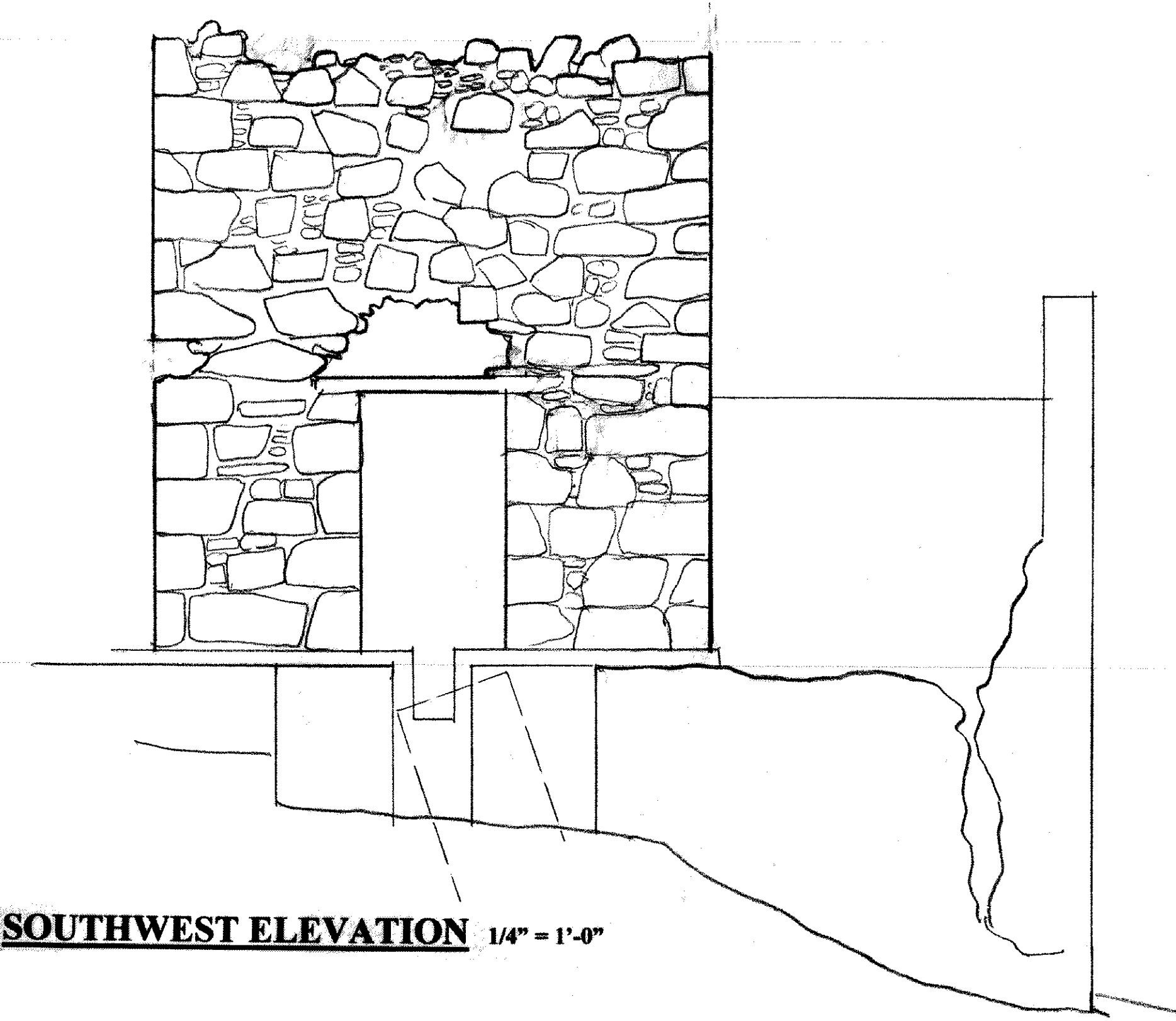
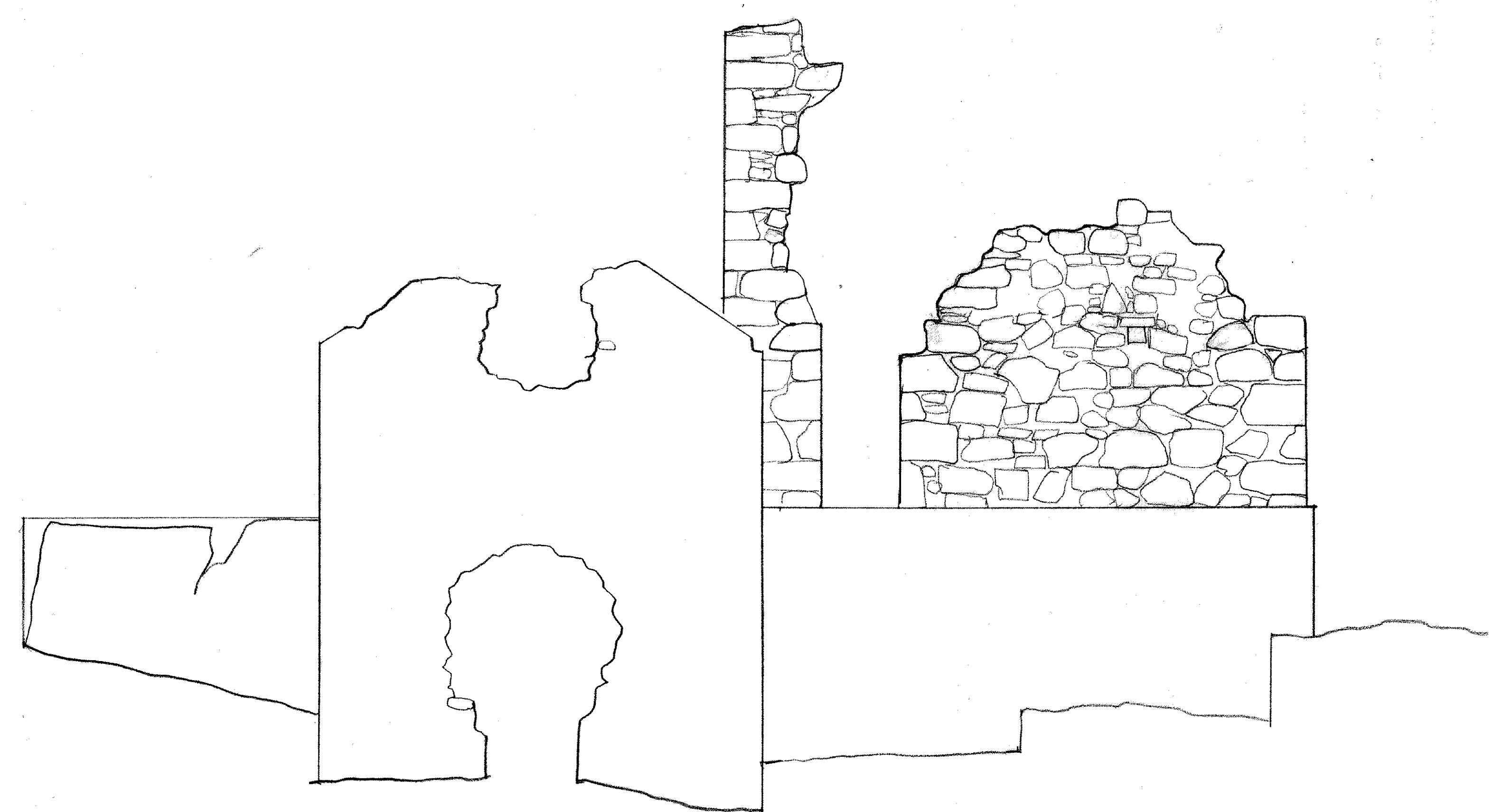


NORTHWEST ELEVATION 1/4" = 1'-0"



SOUTHWEST ELEVATION 1/4" = 1'-0"



SOUTHEAST ELEVATION 1/4" = 1'-0"

Crushing Plant Elevations June 1994
The Copper Mine
Virgin Gorda
British Virgin Islands

CVE
CARIBBEAN VOLUNTEER EXPEDITIONS
BOX 388, CORNING, NEW YORK 14830 607 962 7846

These drawings are based on the March 1988 drawings of
F. C. Gjessing, Architect, St. Thomas, USVI