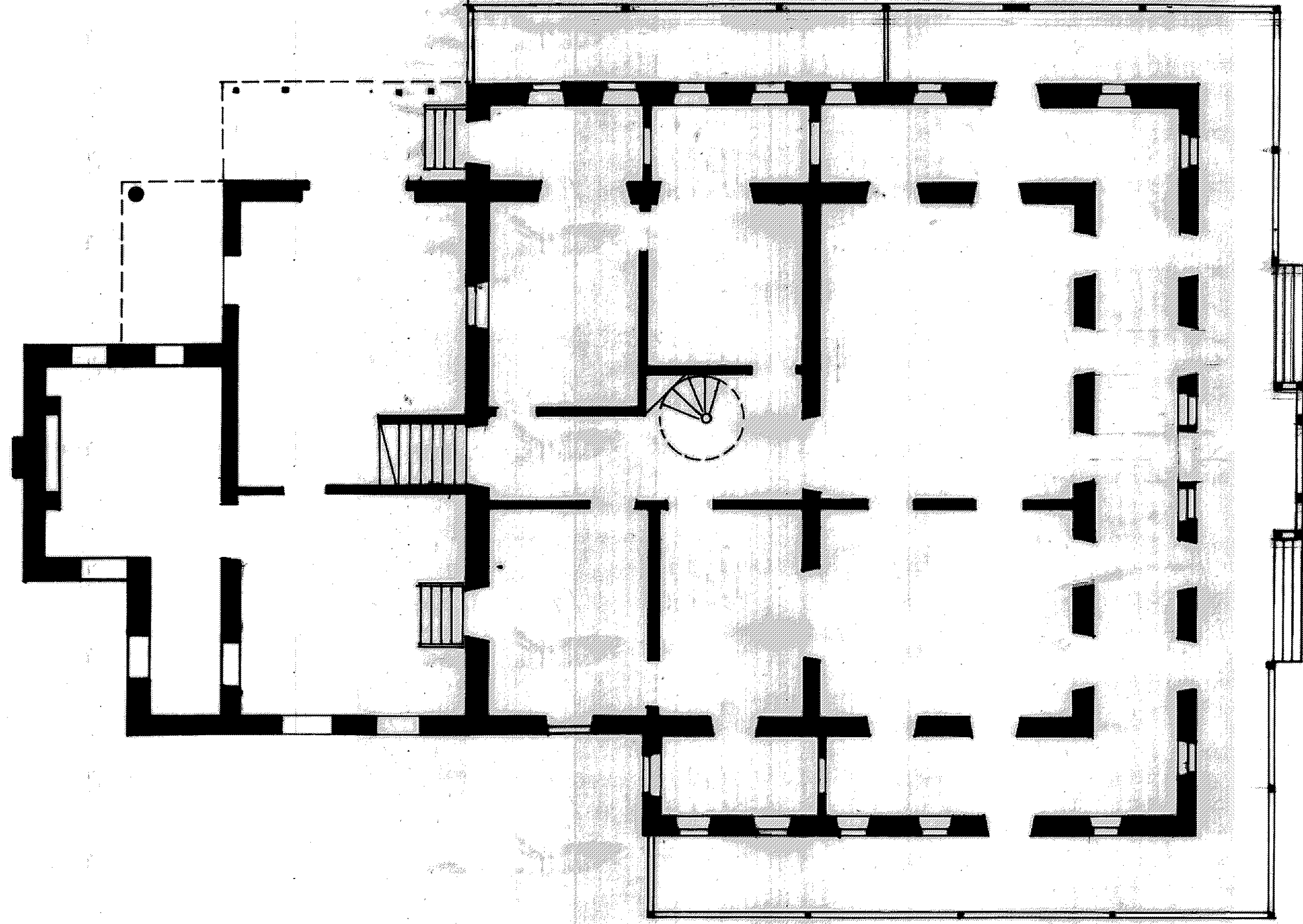
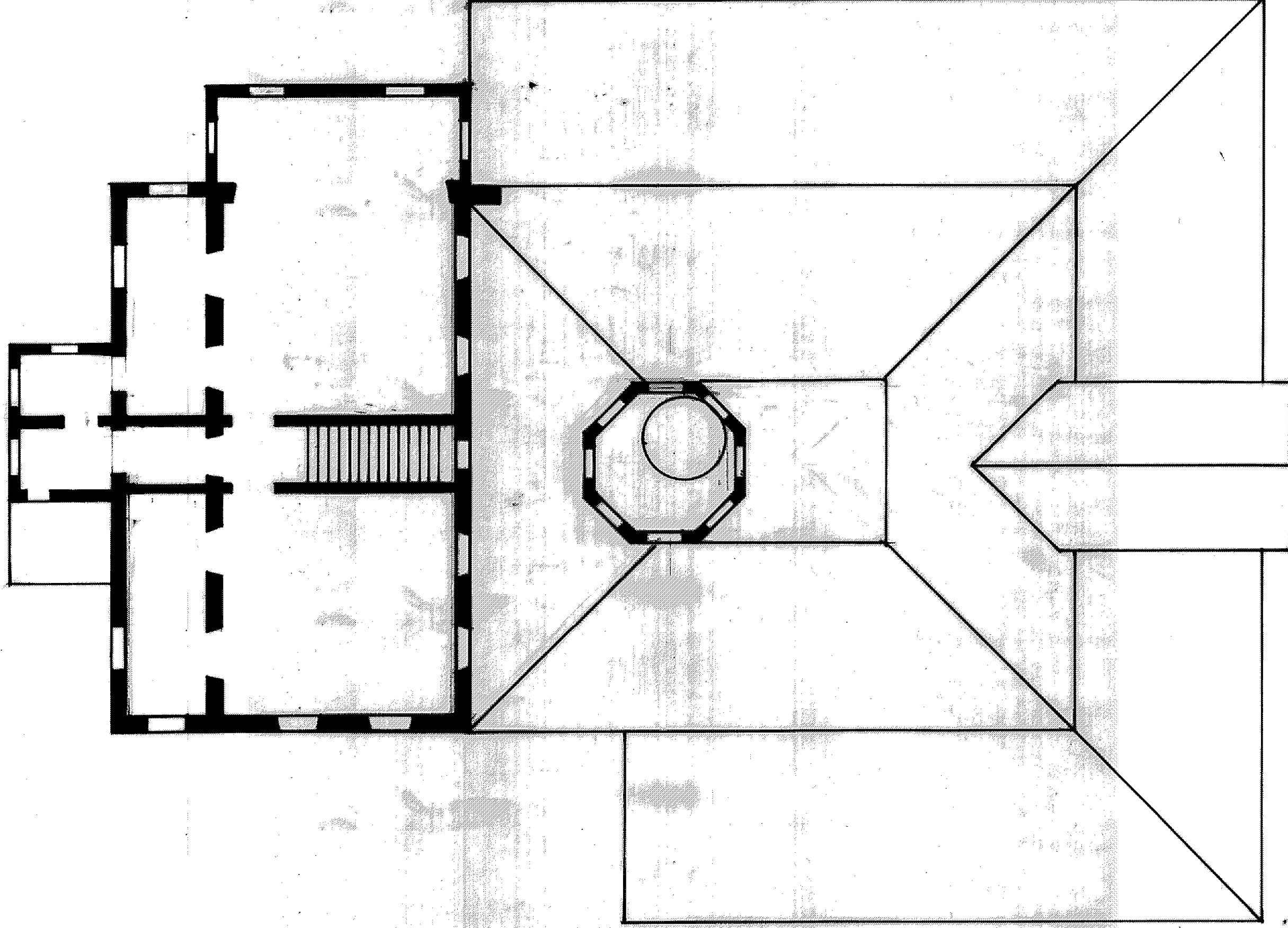


FIRST FLOOR PLAN
1/16" = 1'-0"

Marine House
Hastings, Christ Church
Nov. 1994
For The Barbados National Trust
Drawn By: CVE, Box 388, Corning, NY 14830 (AH)



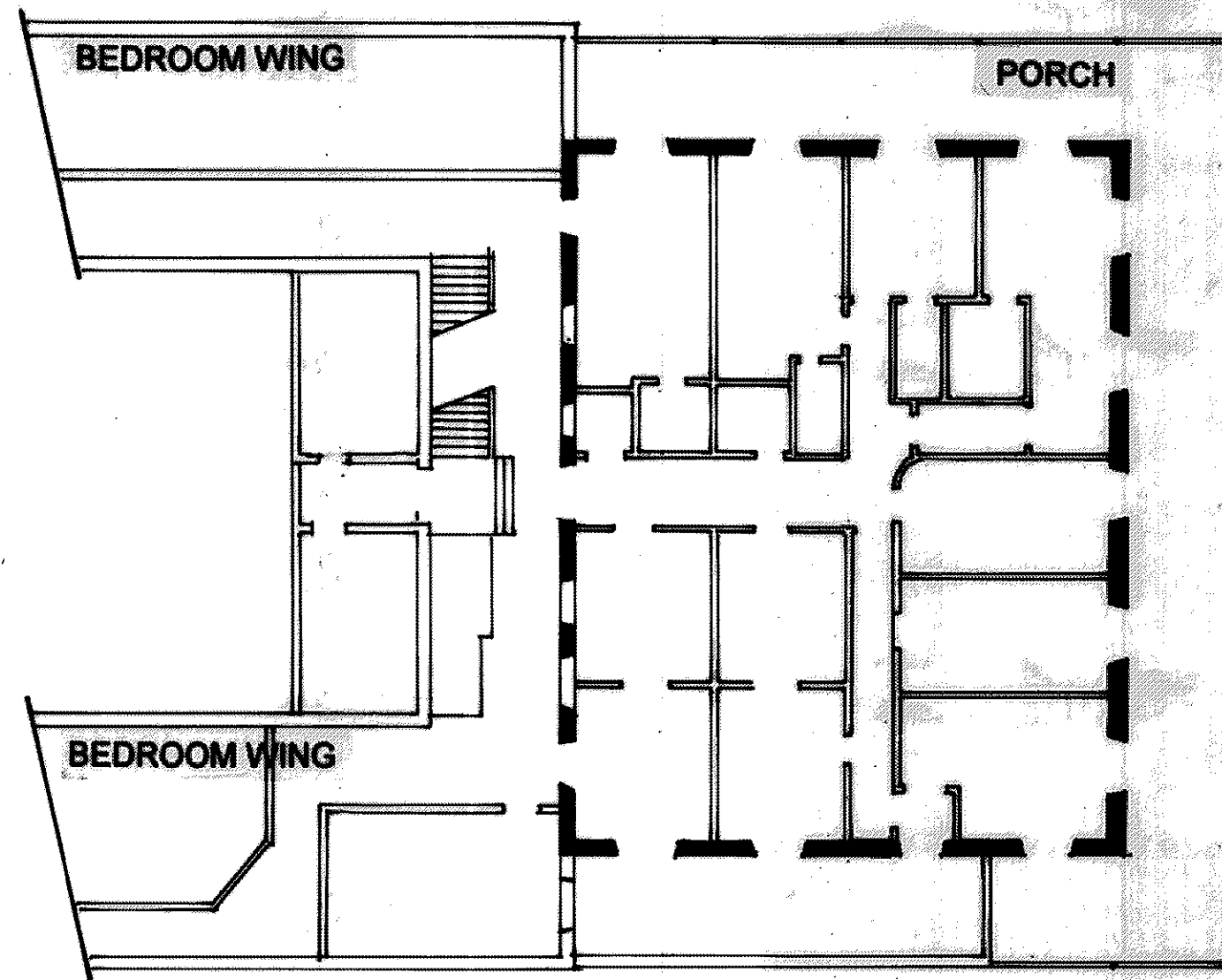
FIRST FLOOR PLAN 11/94 1/8" = 1'
BARBAREES HOUSE
 Barbarees Hill, Bridgetown, Barbados
 For: The Barbados National Trust; Bridgetown, Barbados
 Drawn By: CVE, Box 388, Coming, NY 14830, USA (AH)



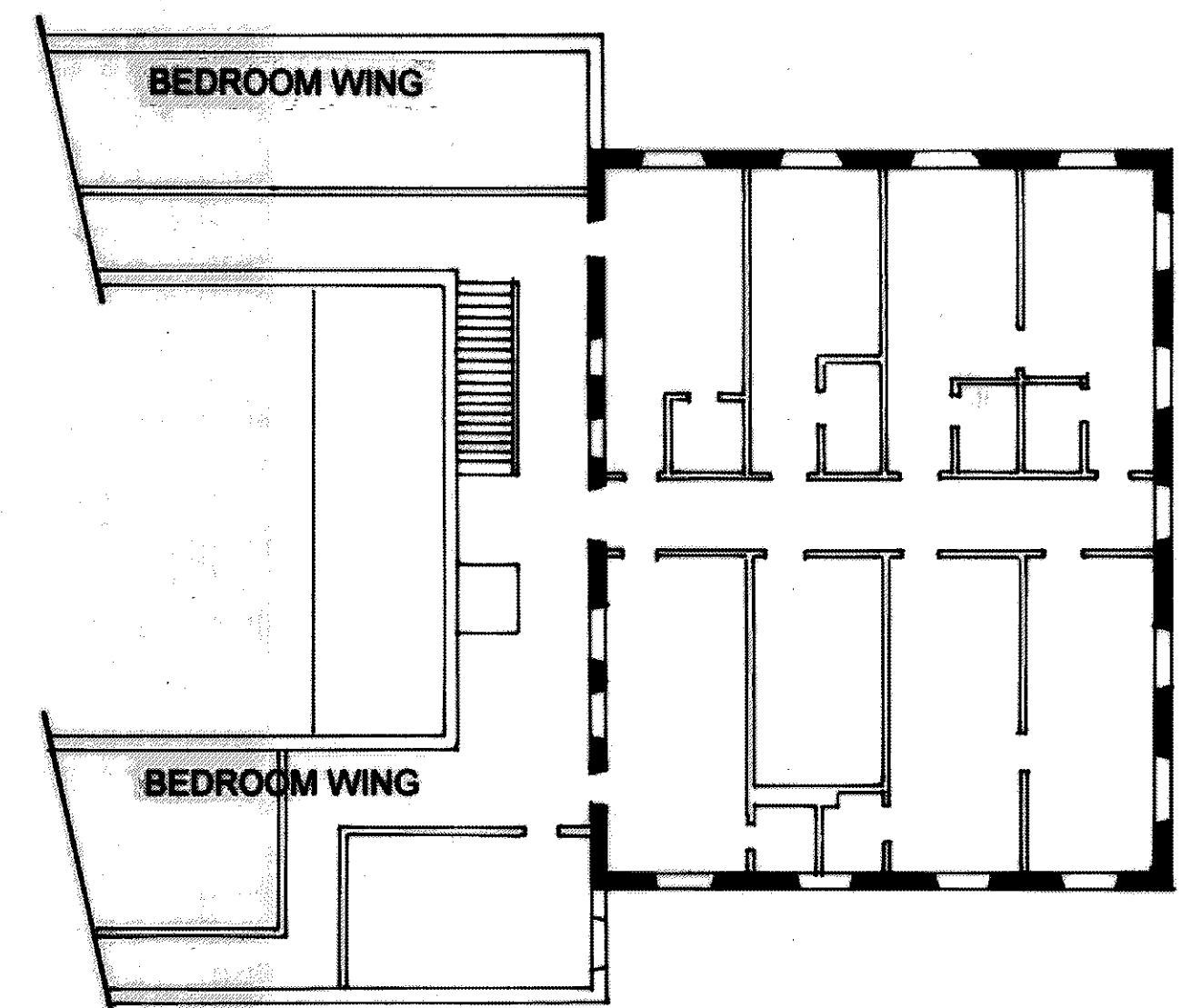
SECOND FLOOR PLAN 11/94 1/8" = 1'

BARBAREES HOUSE

Barbarees Hill, Bridgetown, Barbados
For: The Barbados National Trust, Bridgetown, Barbados
Drawn By: CVE, Box 388, Coming, NY 14830, USA (AH)



SECOND FLOOR PLAN
1/16" = 1'-0"



THIRD FLOOR PLAN
1/16" = 1'-0"

Marine House
Hastings, Christ Church
Nov. 1994
For The Barbados National Trust
Drawn By: CVE, Box 388, Corning, NY 14830 (AH)