

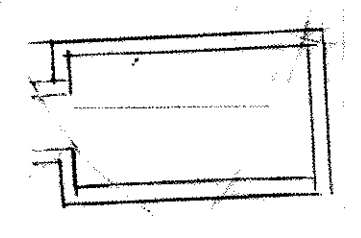
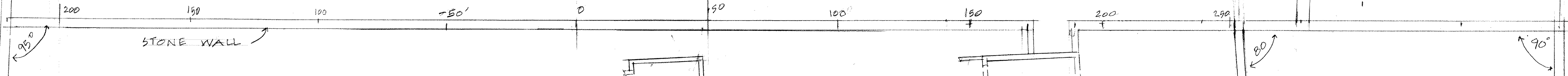
WALL CONTINUES

WALL CONTINUES

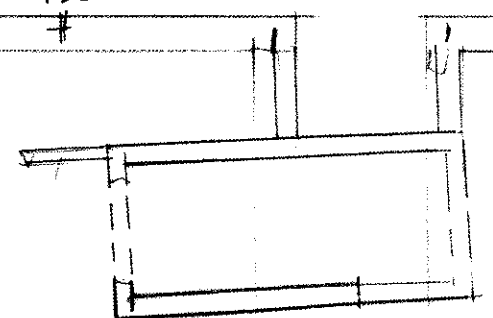
472 F

121' F

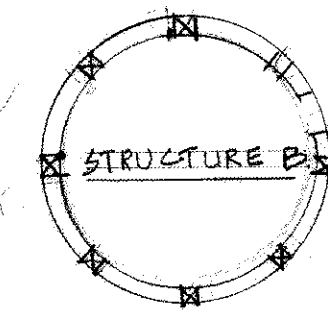
**SITE PLAN 1" = 20'**  
**KERR MOUNT SURVEY**  
 San Salvador, Bahamas - April 2006  
 Volunteers: K Alpha, J Alpha, A Hersh,  
 L Hersh, R Garbafik



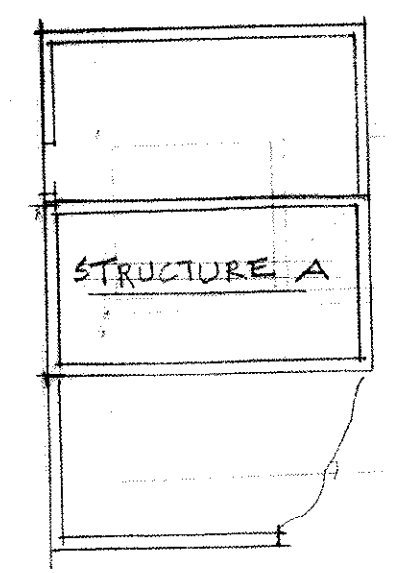
STRUCTURE C



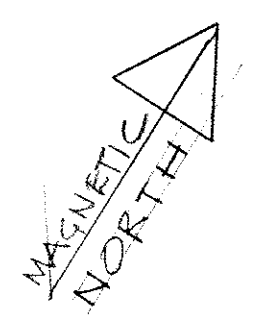
STRUCTURE D



STRUCTURE B



STRUCTURE A



OVERGROWN

STONE WALLS

270'

200' F

156' F

WALL ENDS

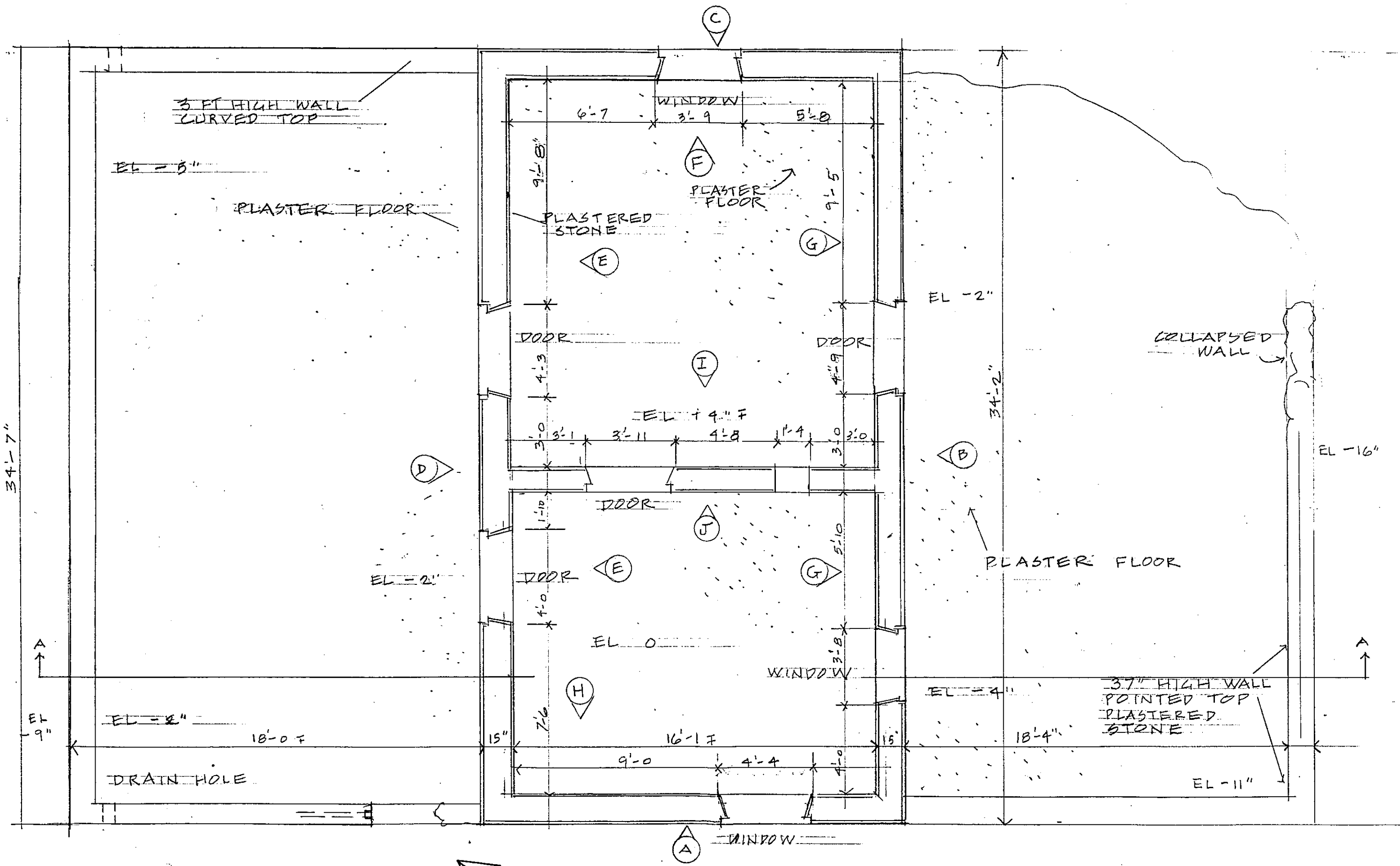
SITE PLAN 1" = 20'

TRAIL FROM ROAD

WALL ENDS IN RUBBLE

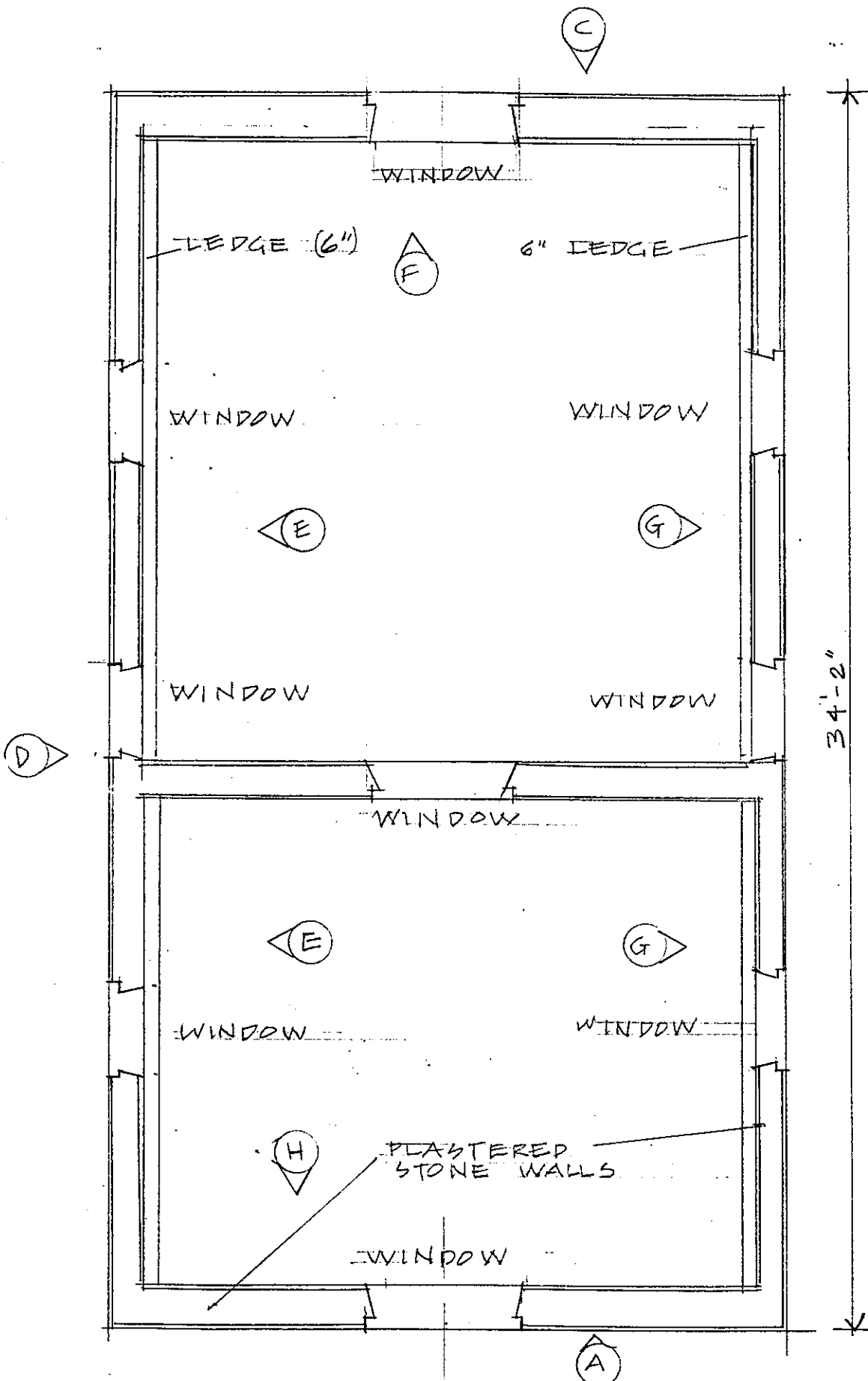
APPROX 100' TO MAIN ROAD

WALL CONTINUES



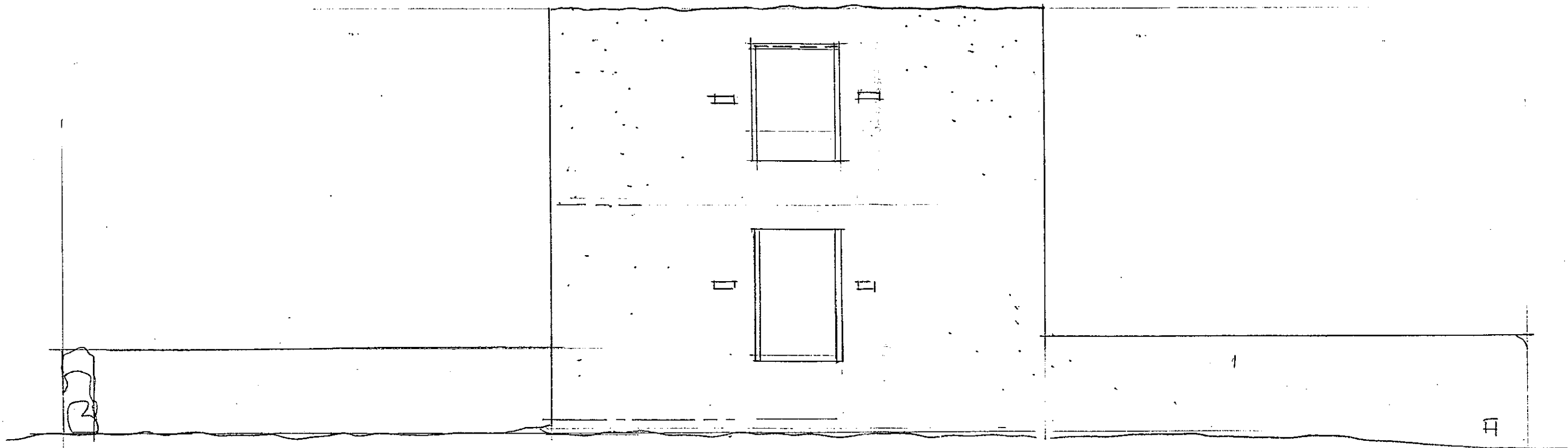
FLOOR PLAN 1/4" = 1'-0"

**Structure A**  
**KERR MOUNT SURVEY**  
 San Salvador, Bahamas- April 2006  
 Volunteers: K Alpha, J Alpha, A Hersh  
 L Hersh, R Garbark

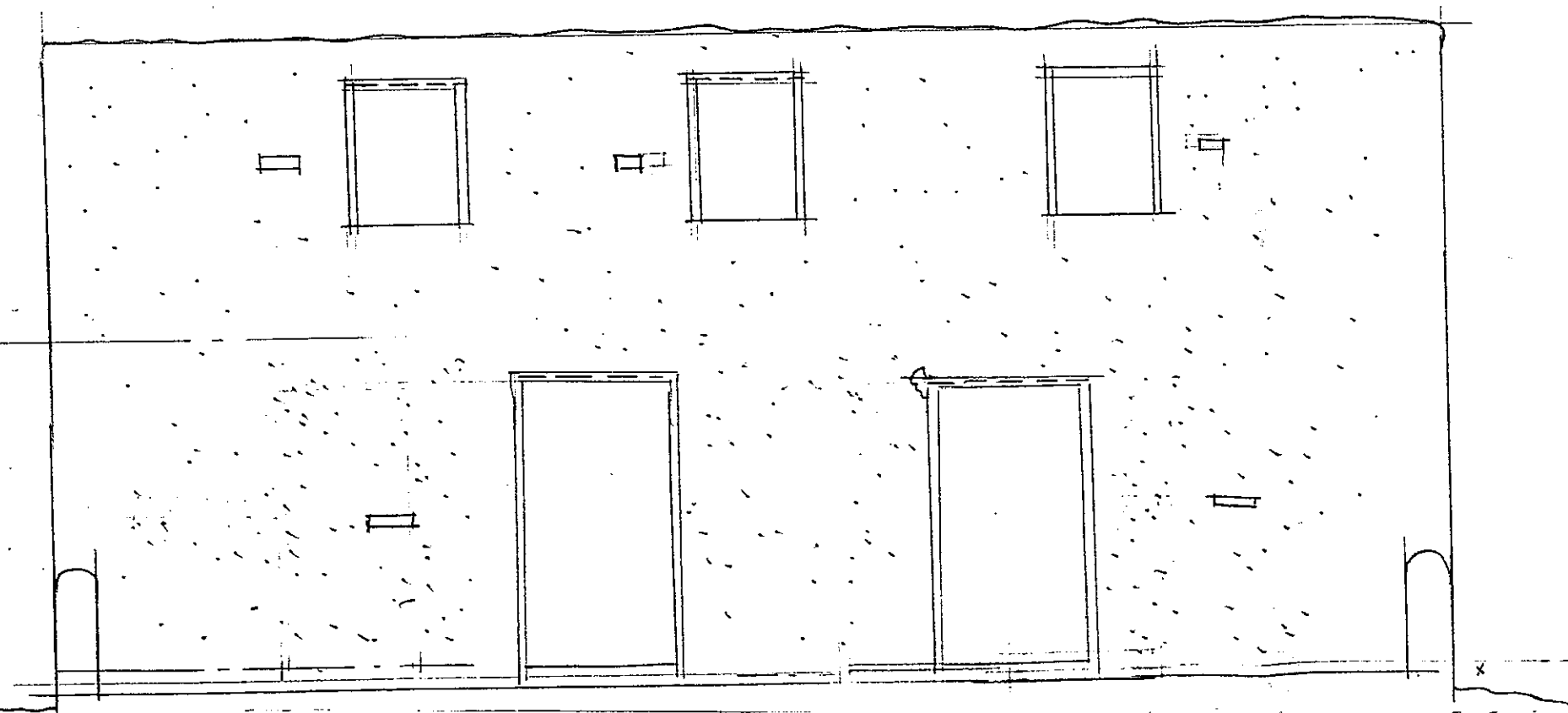


SECOND FLOOR PLAN  $\frac{1}{4}'' = 1'-0''$

**Structure A**  
**KERR MOUNT SURVEY**  
 San Salvador, Bahamas- April 2006  
 Volunteers: K Alpha, J Alpha, A Hersh  
 L Hersh, R Garbark

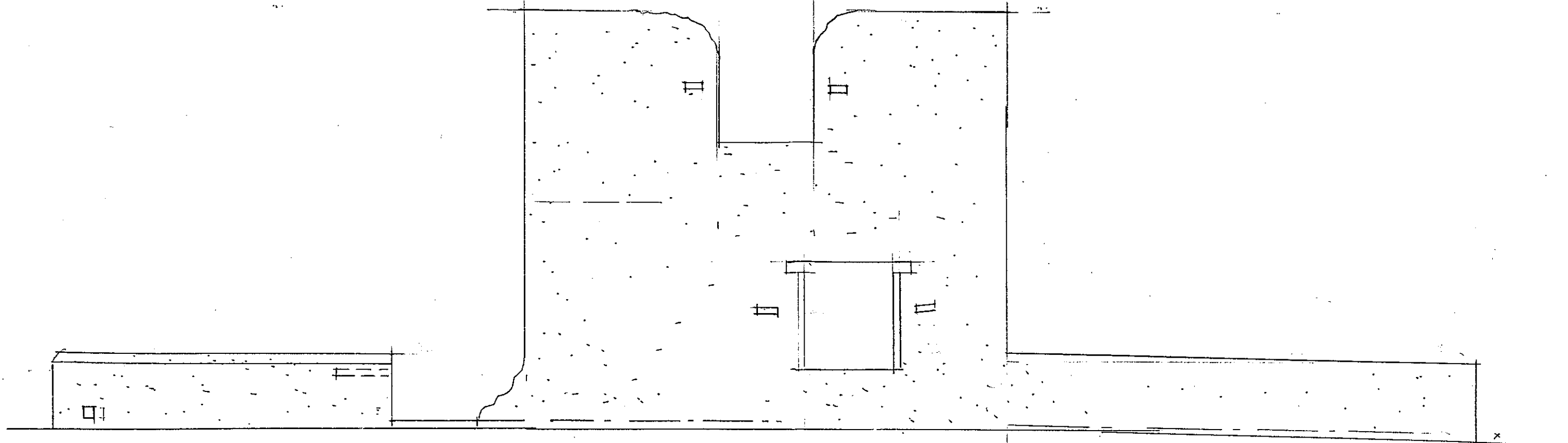


ELEVATION C 1/4"=1'-0"



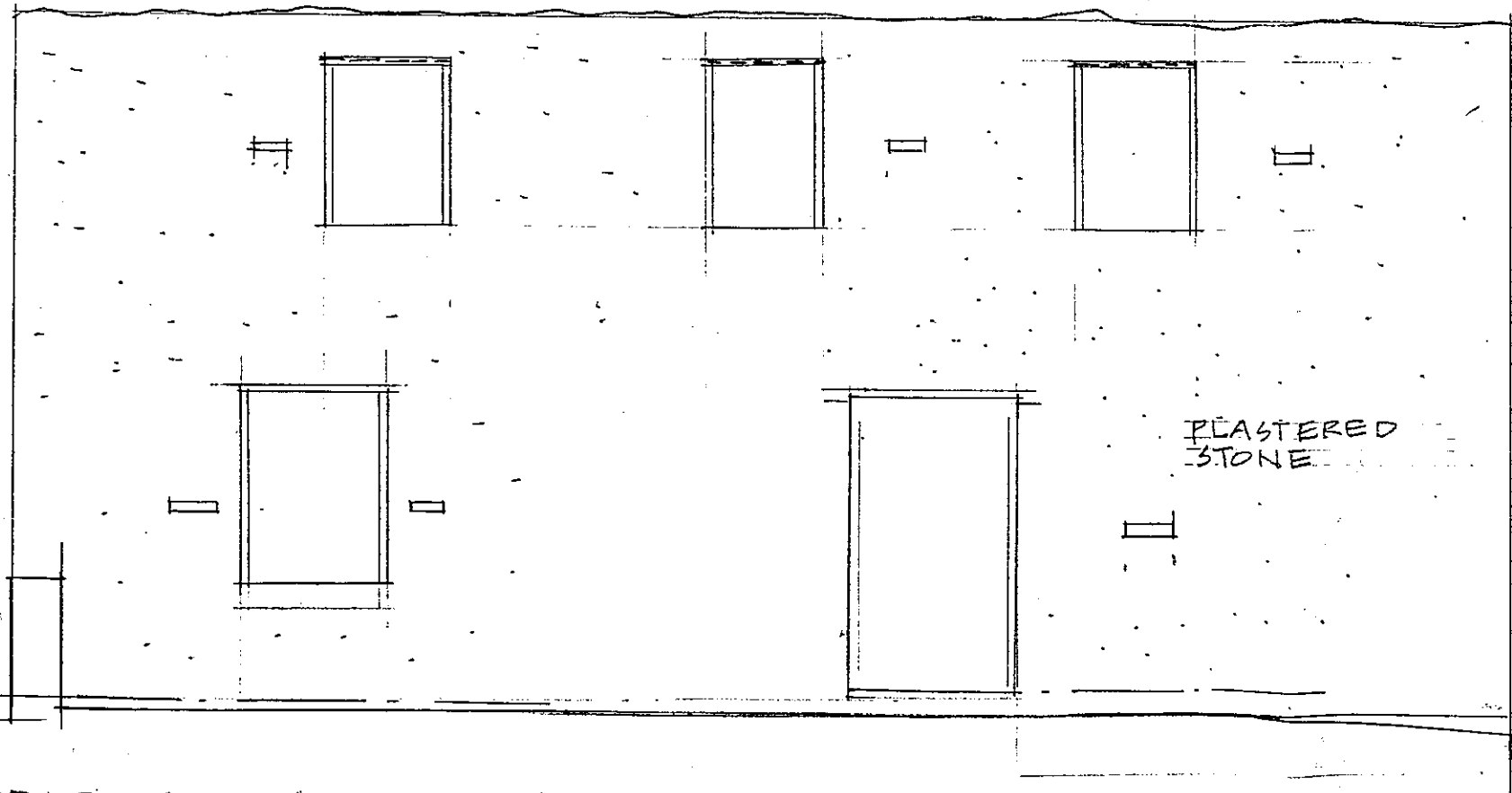
ELEVATION D 1/4"=1'-0"

**Structure A**  
**KERR MOUNT SURVEY**  
San Salvador, Bahamas- April 2006  
Volunteers: K Alpha, J Alpha, A Hersh  
L Hersh, R Garbark



ELEVATION A 1/4" = 1'-0"

--- WOOD LINTLE STILL INTACT



ELEVATION B 1/4" = 1'-0"

PLASTERED  
STONE

**Structure A**  
**KERR MOUNT SURVEY**  
 San Salvador, Bahamas- April 2006  
 Volunteers: K Alpha, J Alpha, A Hersh  
 L Hersh, R Garbark

WOOD LINTLE

15'-10" F

8'-6" F

LEDGE

PLASTERED  
LIME STONE  
WALLS

3'-0" F

SECTION A-A 1/4" = 1'-0"

BEAM POCKET

10'-0"

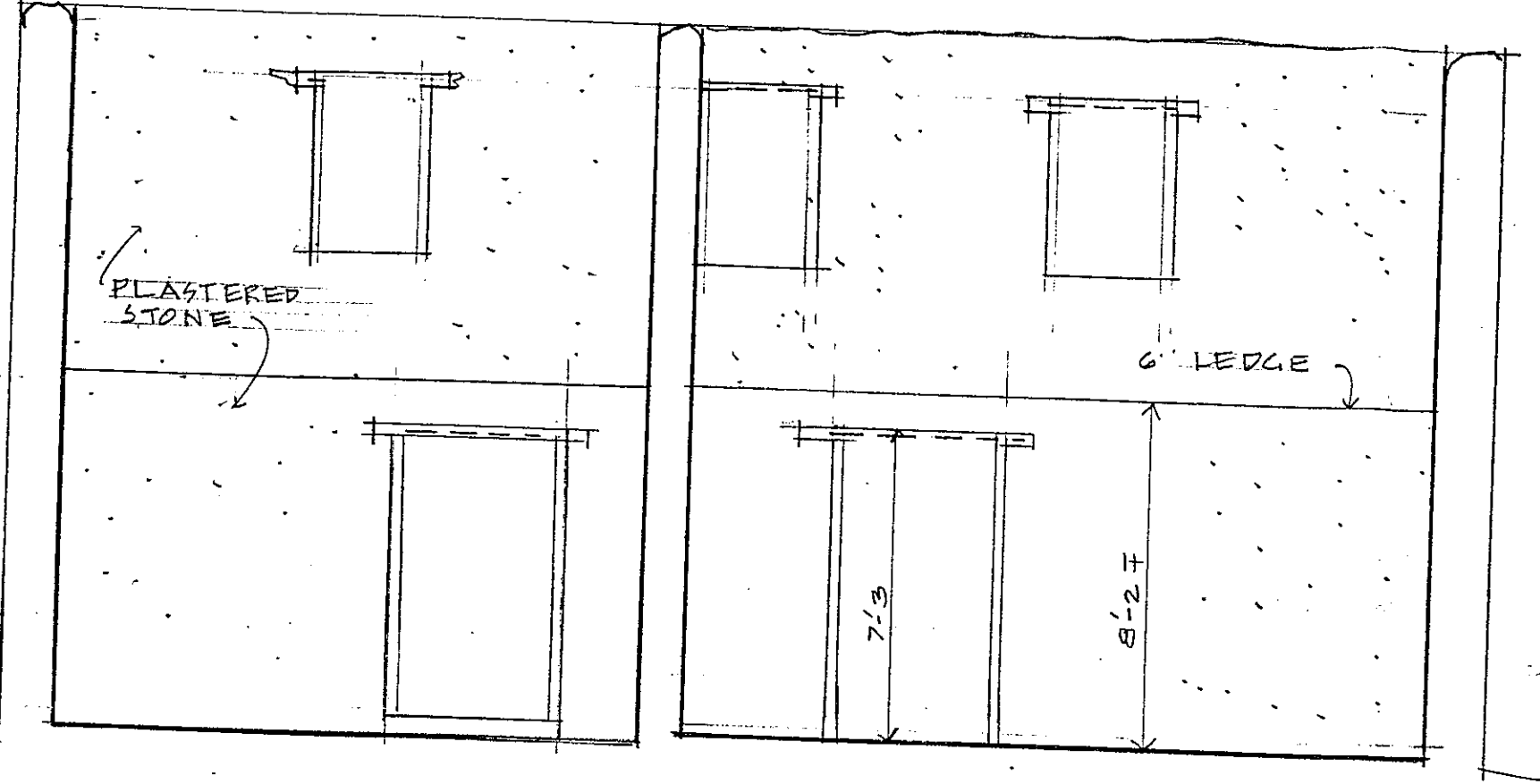
1'-2"

3'-2"

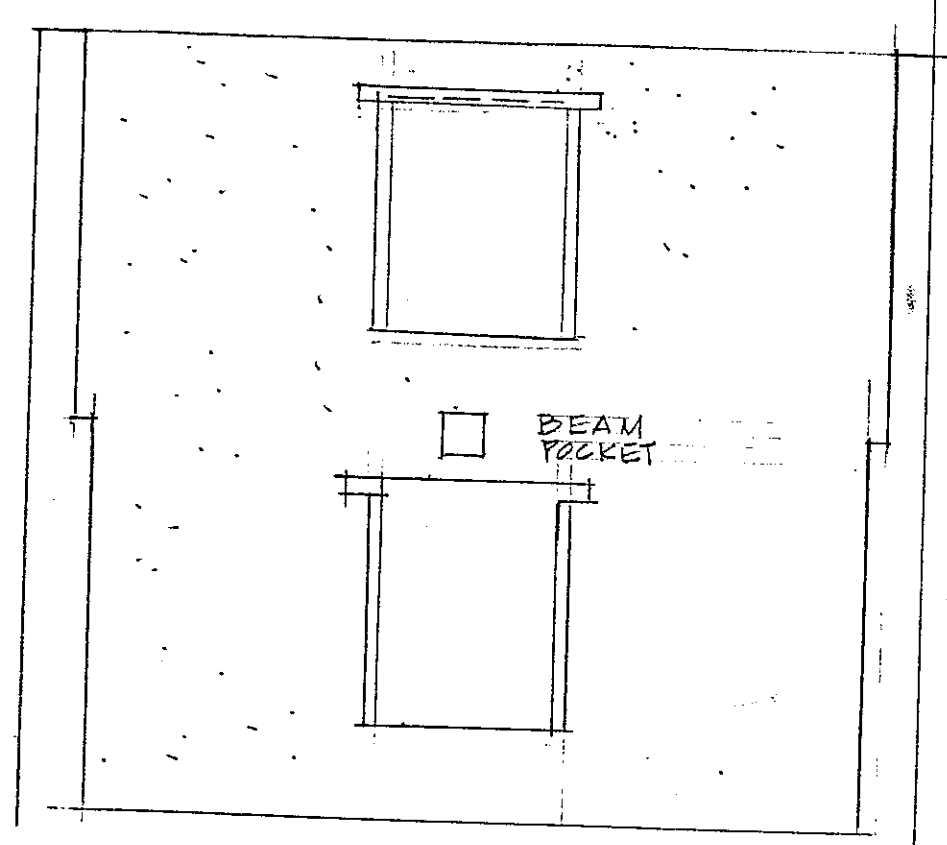
ELEVATION I 1/4" = 1'-0"

ELEVATION J 1/4" = 1'-0"

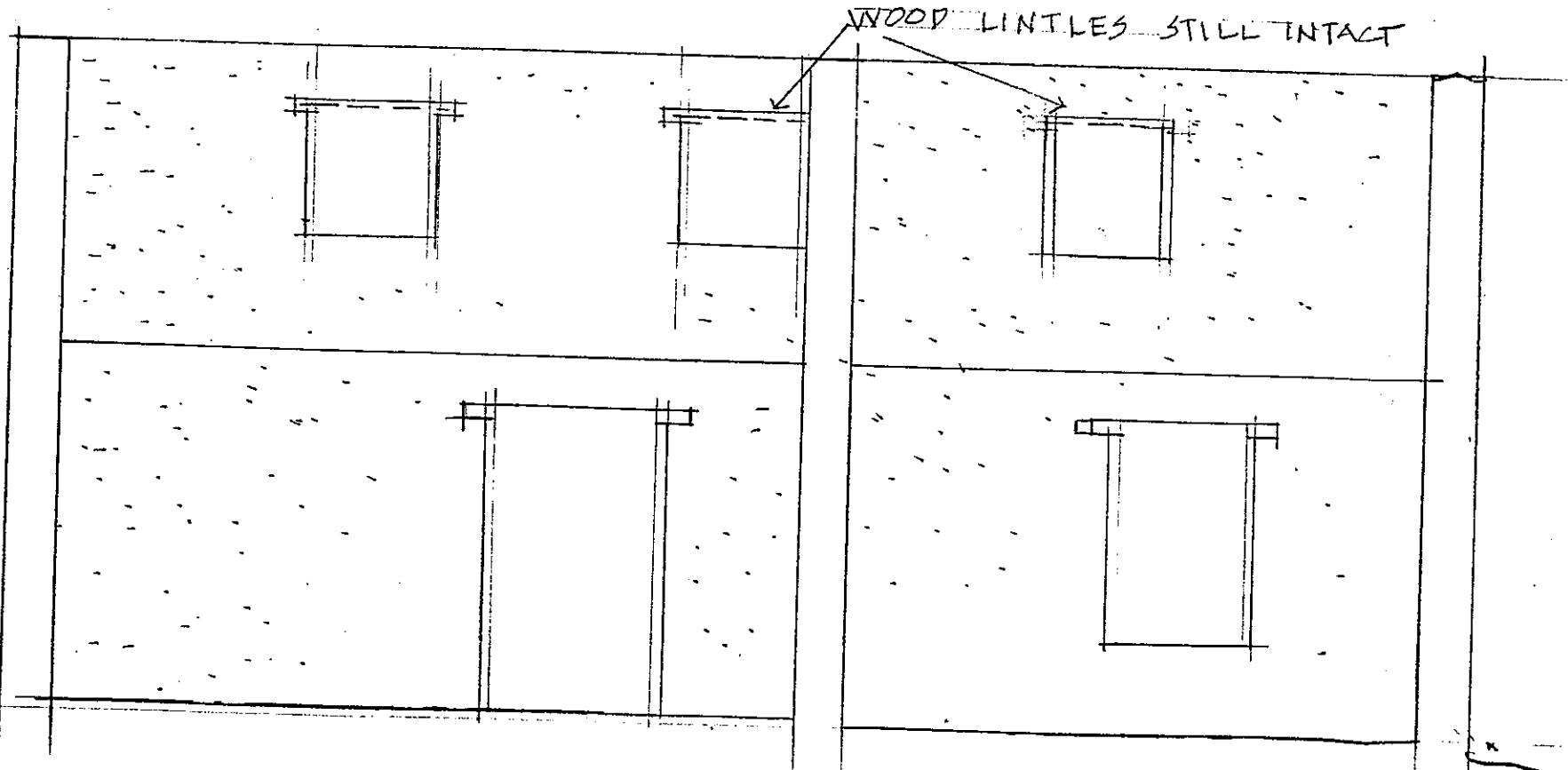
**Structure A**  
**KERR MOUNT SURVEY**  
 San Salvador, Bahamas- April 2006  
 Volunteers: K Alpha, J Alpha, A Hersh  
 L Hersh, R Garbark



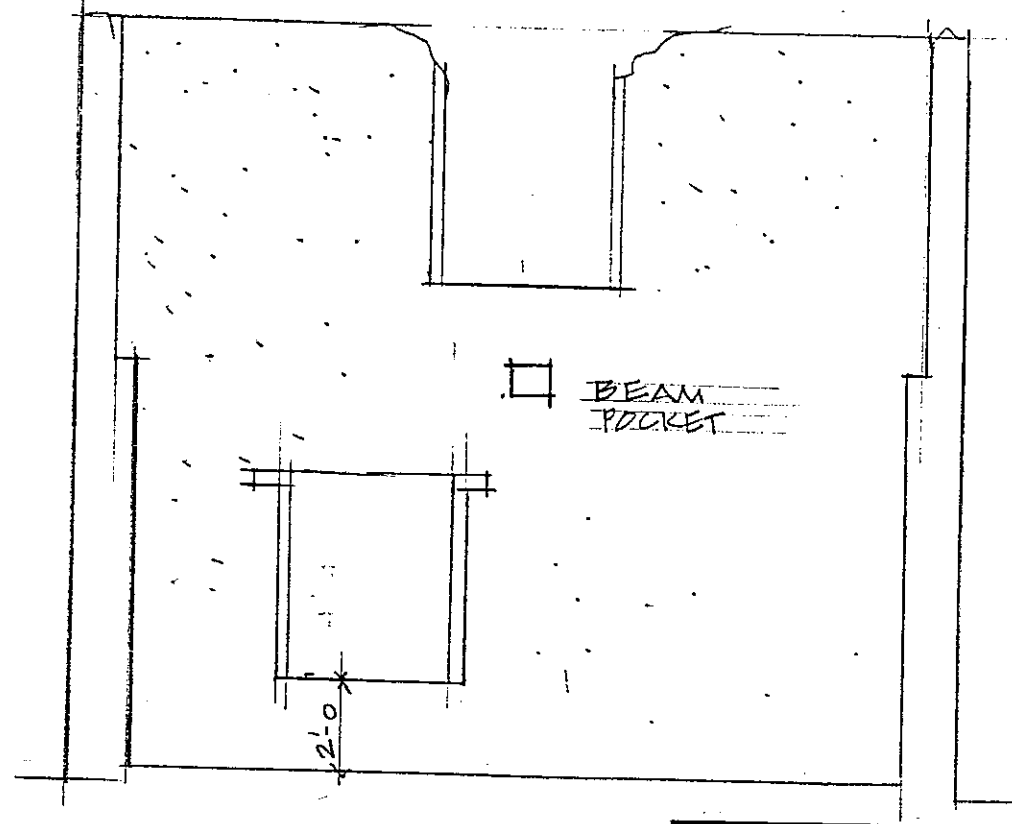
INTERIOR ELEVATION E 1/4"



INTERIOR ELEVATION F 1/4"

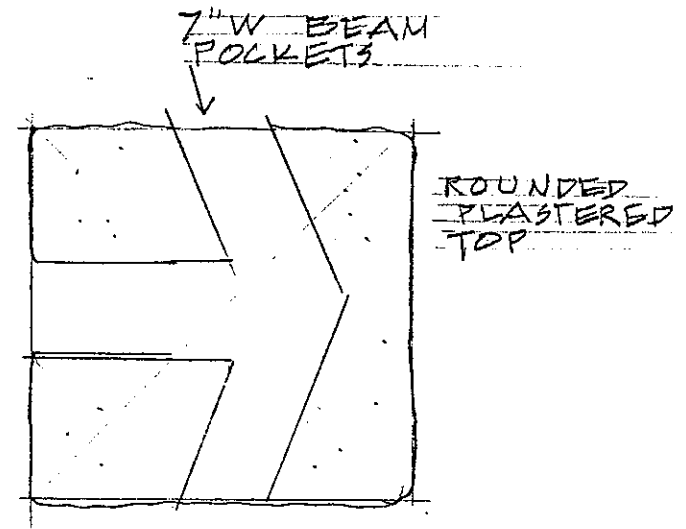
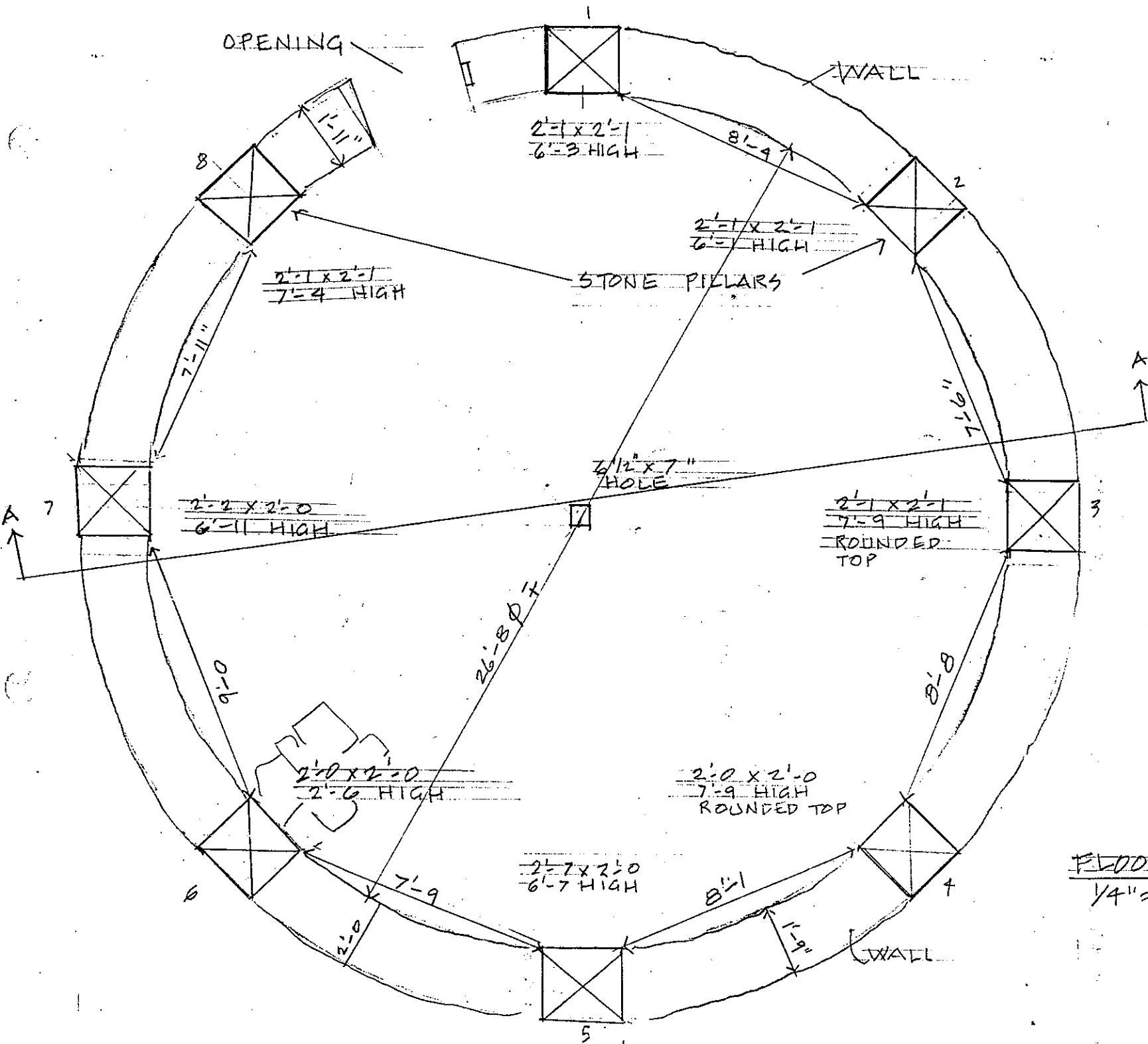


INTERIOR ELEVATION G 1/4" = 1'-0"



ELEVATION H

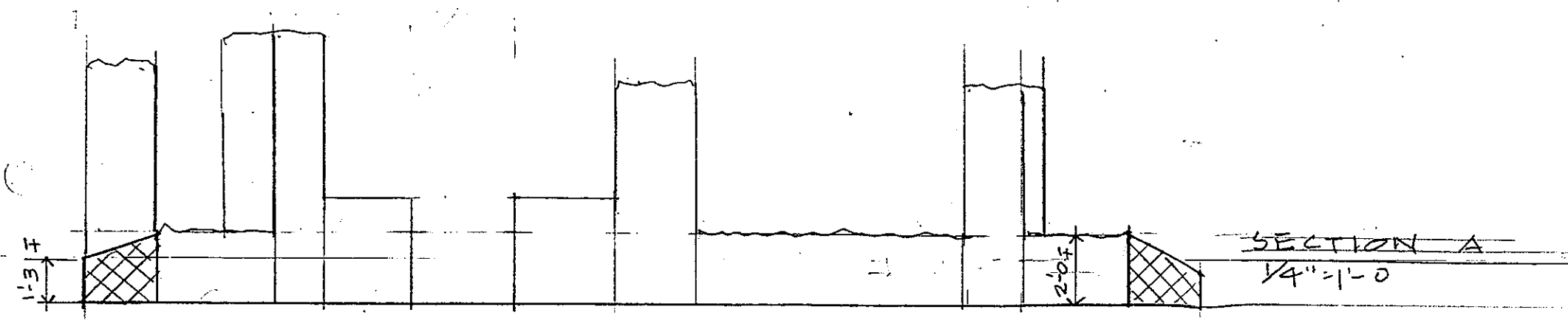
**Structure A**  
**KERR MOUNT SURVEY**  
 San Salvador, Bahamas- April 2006  
 Volunteers: K Alpha, J Alpha, A Hersh  
 L Hersh, R Garbark



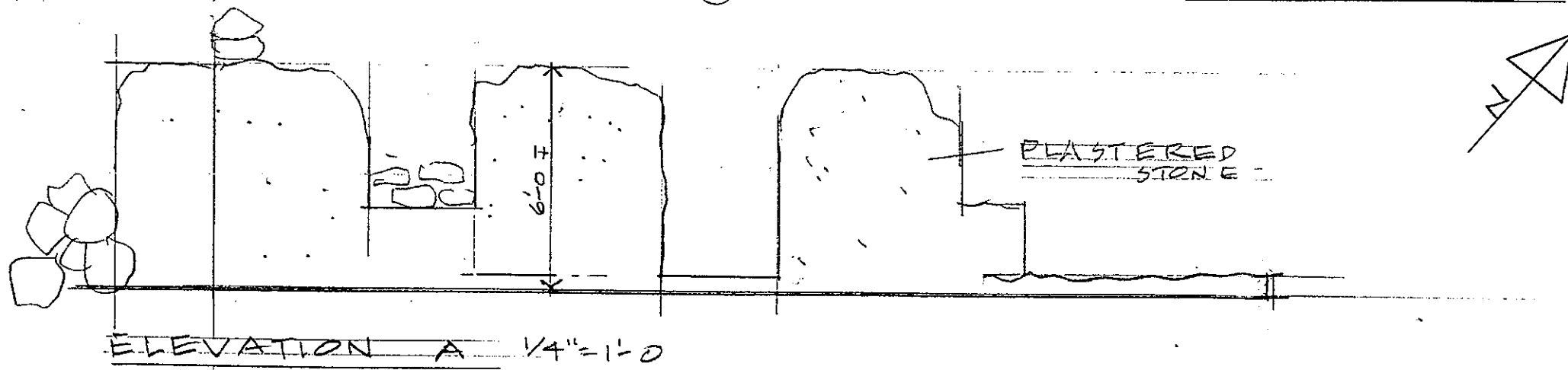
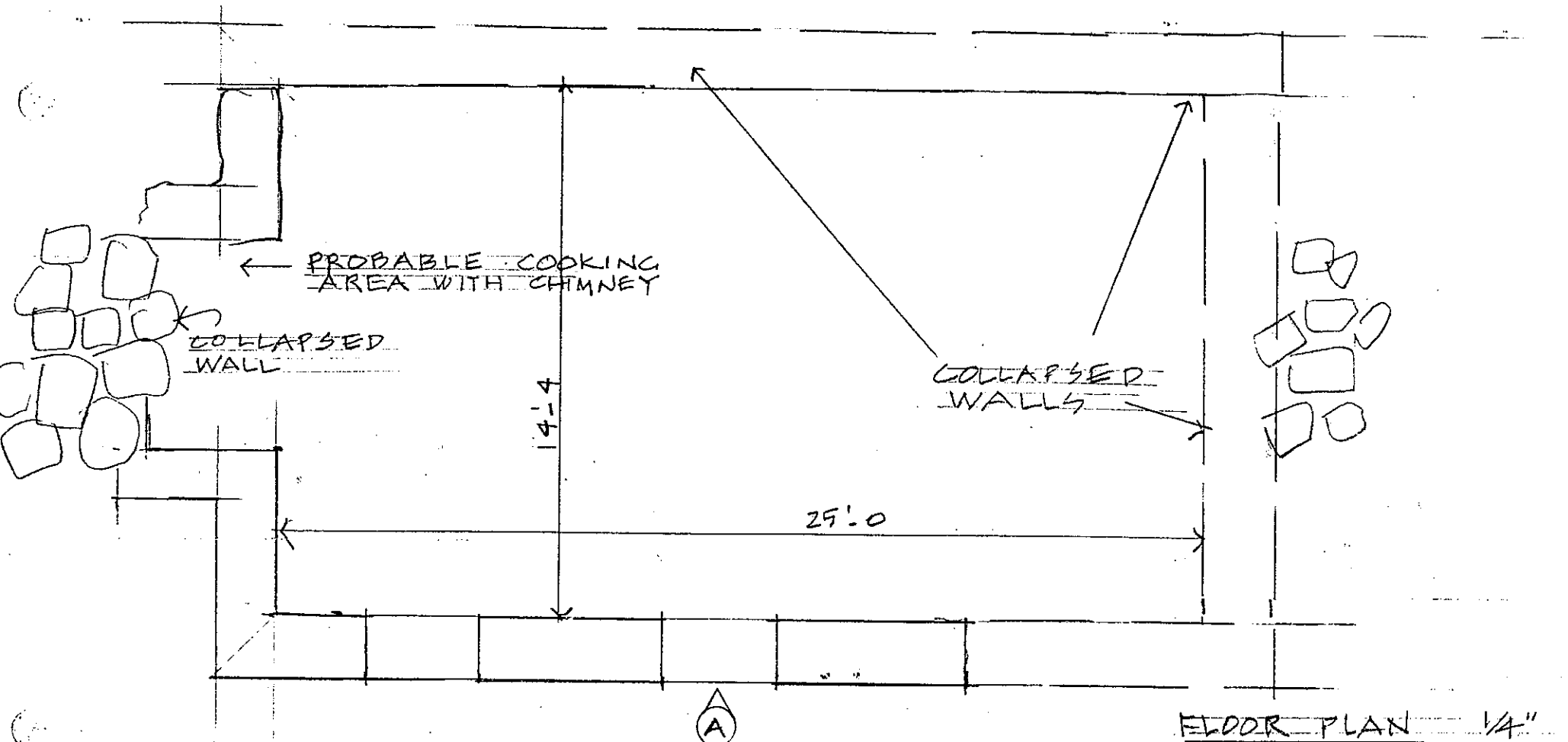
TOP OF COL. 3  
 COL. 4 ONLY HAS BEAM POCKETS TO SIDES (NOT CENTER)



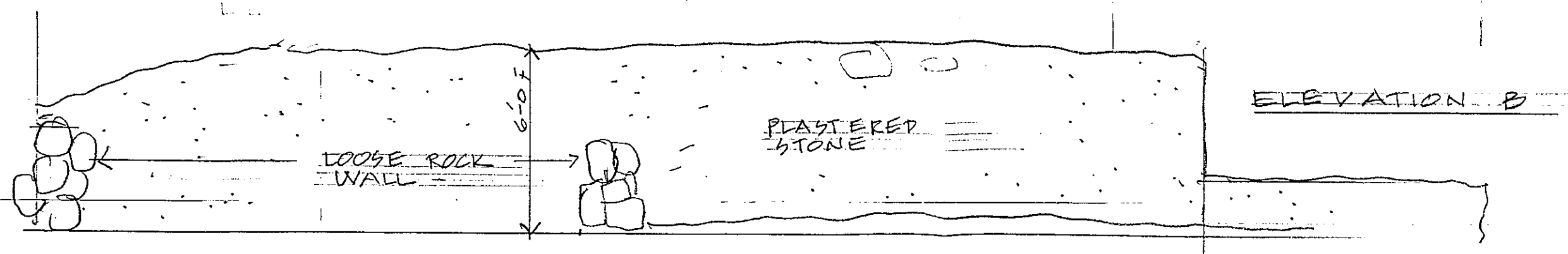
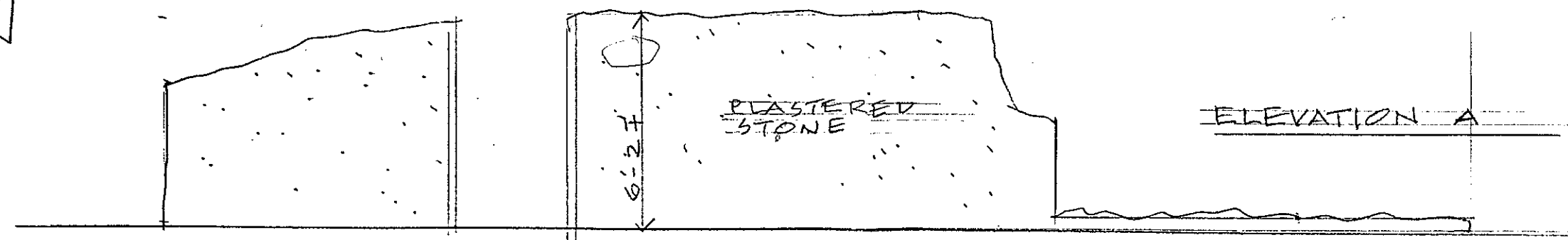
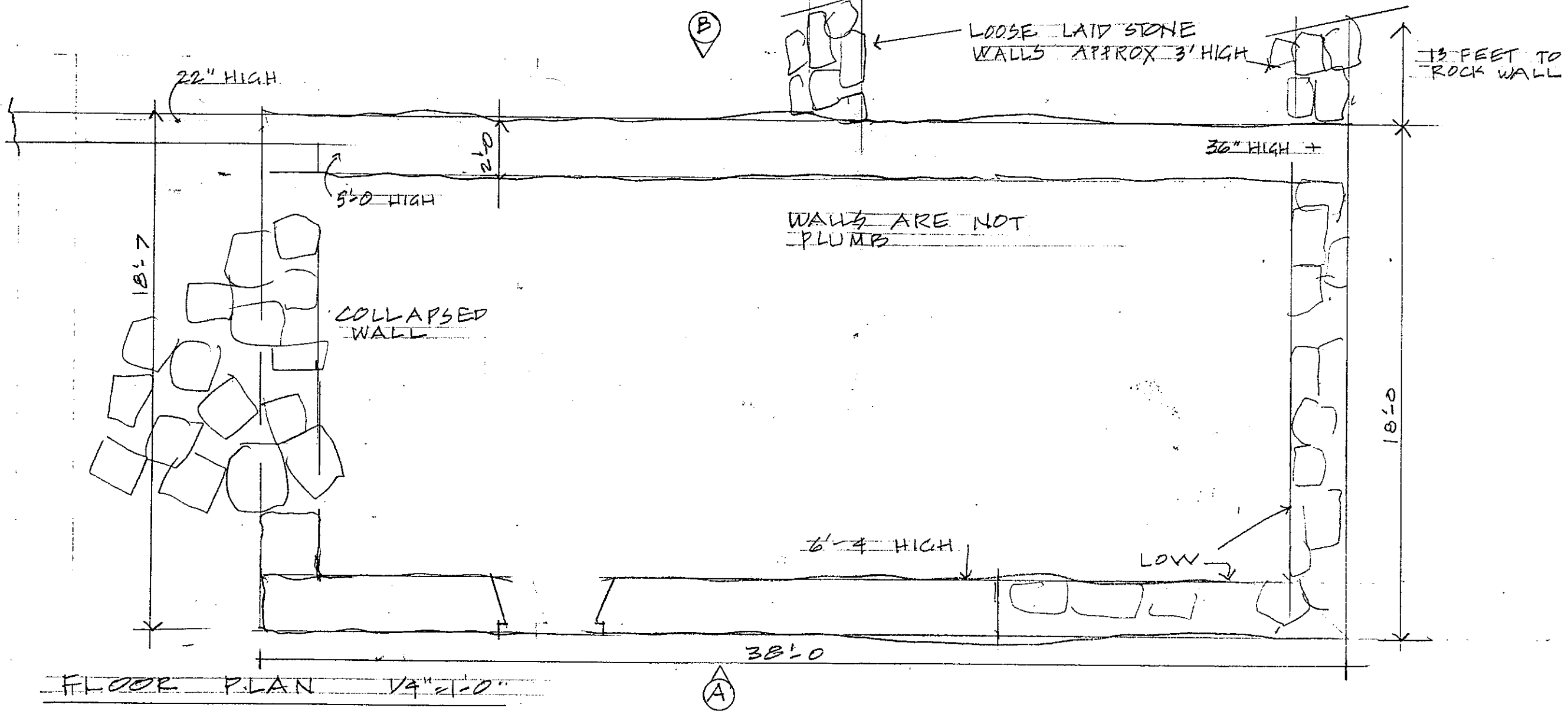
FLOOR PLAN  
 1/4" = 1'-0"







**Structure C**  
**KERR MOUNT SURVEY**  
 San-Salvador, Bahamas - April 2006  
 Volunteers: K Alpha, J Alpha, A Hersh  
 L Hersh, R Garbark



**Structure D**  
**KERR MOUNT SURVEY**  
 San Salvador, Bahamas - April 2006  
 Volunteers: K Alpha, J Alpha, A Hersh  
 L Hersh, R Garbark