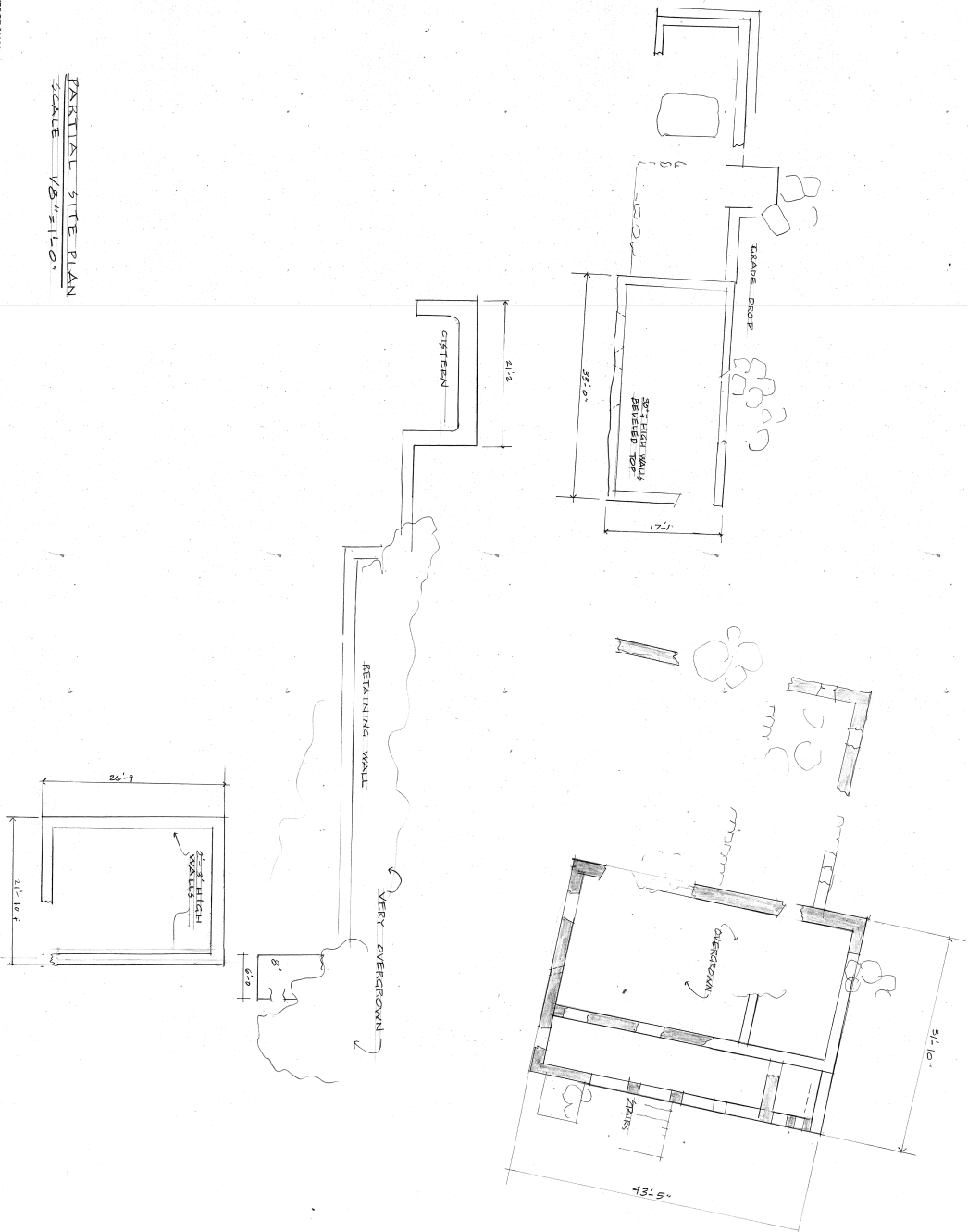


THE AREA WAS VERY OVERGROWN  
 AND WAS VERY UNUSUAL IN CULTURE.  
 DIMENSIONS ARE APPROXIMATE

PARTIAL SITE PLAN  
 SCALE 1/8" = 1'-0"



**PARTIAL SITE PLAN**

CANNEL BAY  
 ST. JOHN, U.S. VI  
 June 1996  
 Prepared for: The Virgin Islands National Park Service  
 Prepared by: Caribbean Volunteer Expeditions  
 Box 388, Corning, NY 14830  
 Volunteers: A. And C. Hersh, R. And C. Bernard, D. Graft, D. Doolittle, S. Bane