

PLAN

1/4" = 1'

⊕ ELEVATIONS - FEET/INCHES

**BEEF ISLAND ESTATE HOUSE RUIN
BRITISH VIRGIN ISLANDS**

FOR
B. V. I. HISTORICAL SOCIETY

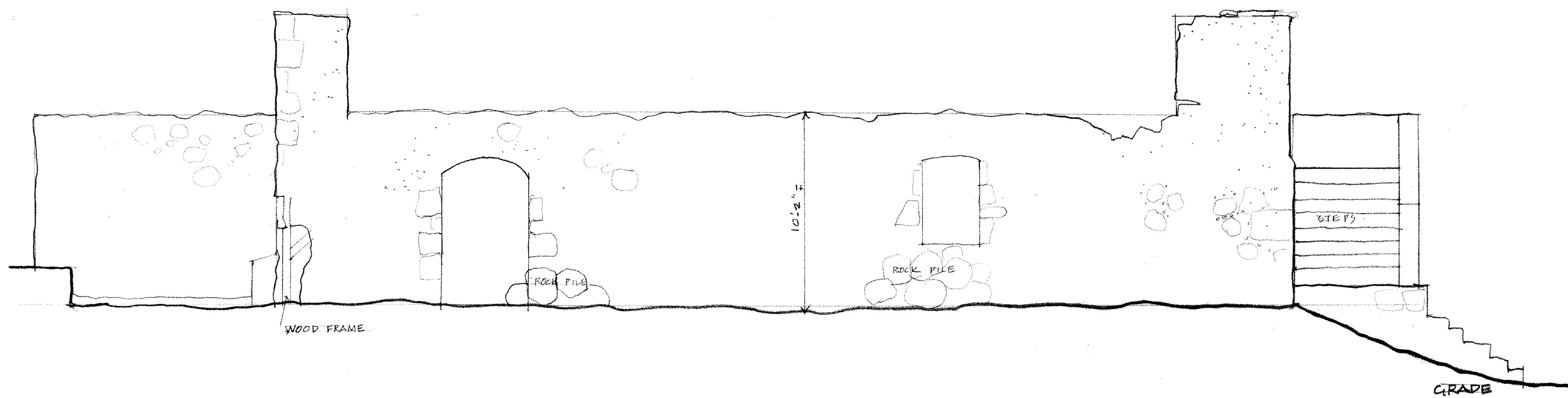
DATE 12/92 PROJECT NO. 0292

CARIBBEAN VOLUNTEER EXPEDITIONS
BOX 388 CORNING, NY 14830
607 562 7846

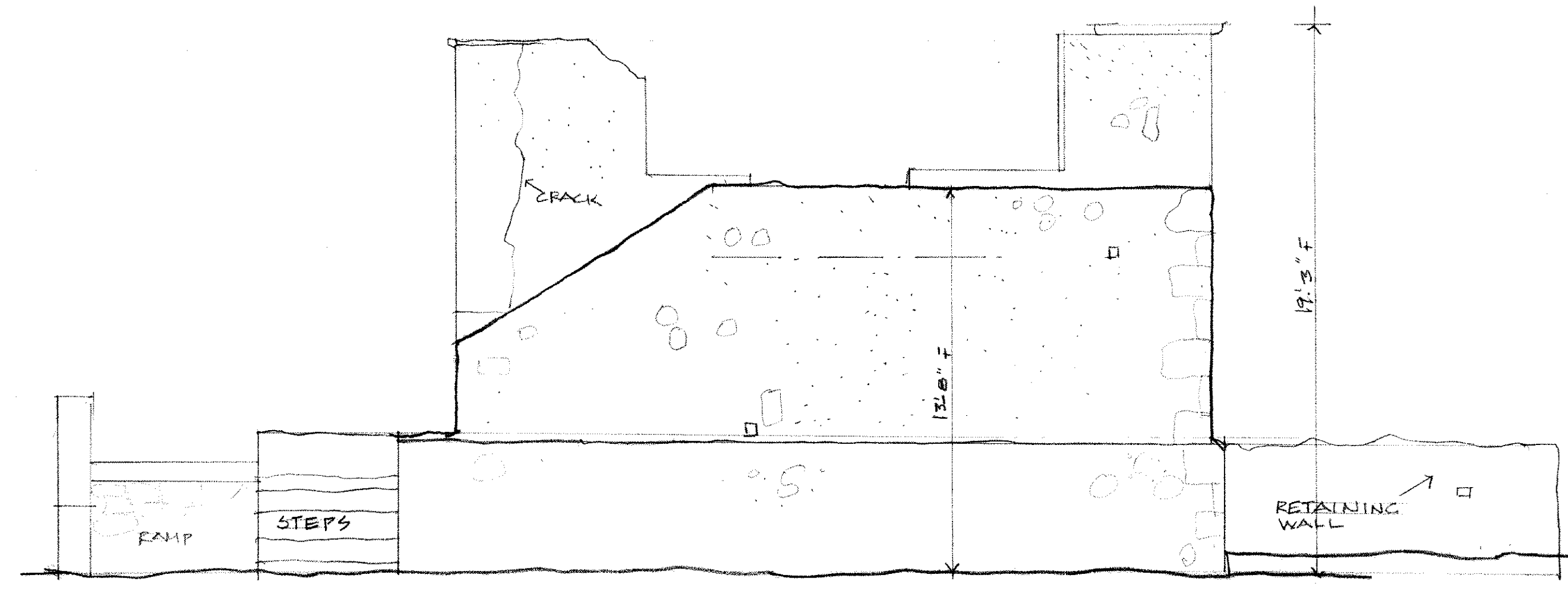
C V E

MEASURED BY
A. LIEBH & NIELSON
N. RADNICK & J. EDWARDS
DRAWN BY
A. HERSH

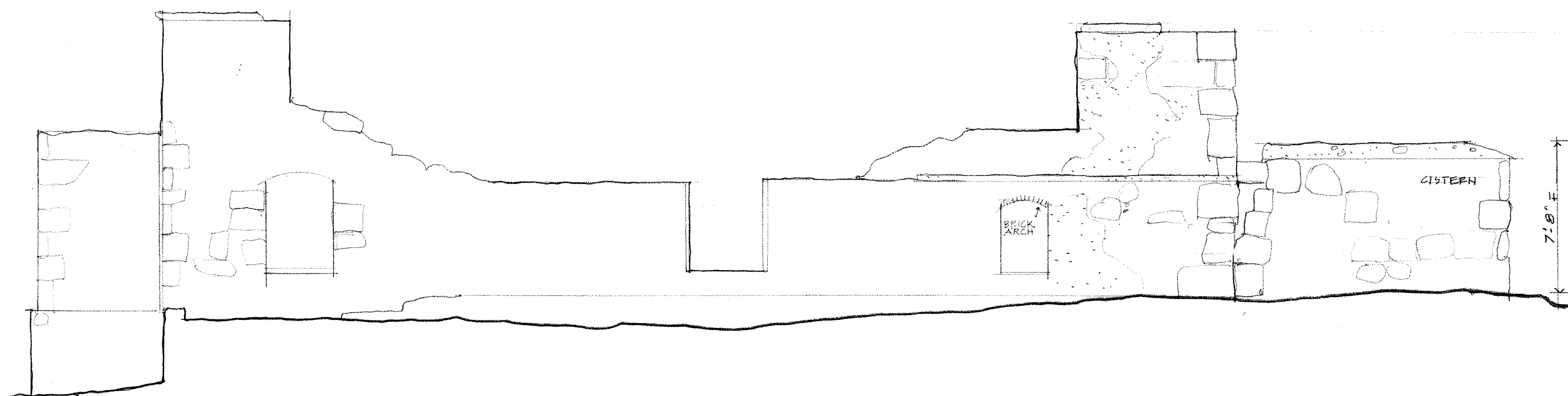
SHEET
1
OF
3



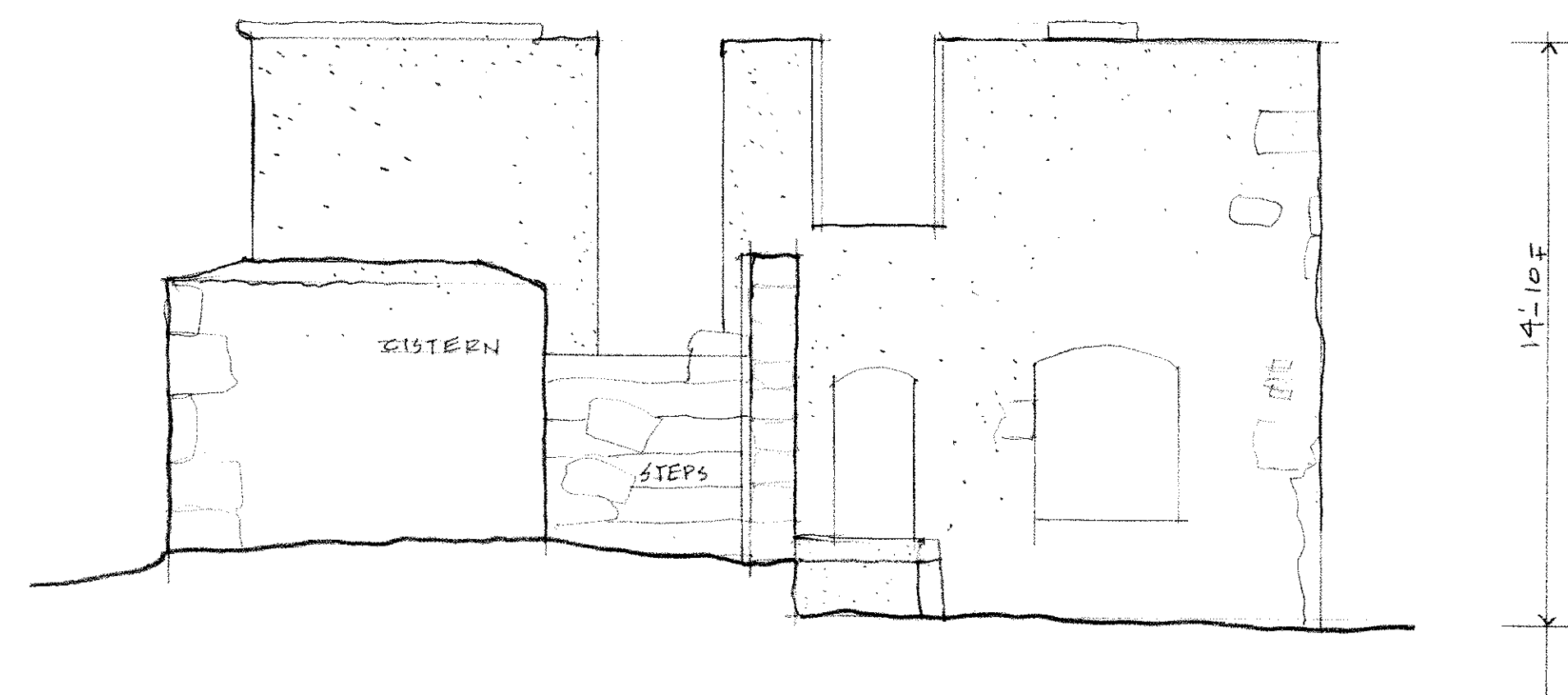
WEST



SOUTH



EAST



NORTH

ELEVATIONS MAIN STRUCTURE

1/4" = 1'-0"

NOTES

- WALLS: PLASTERED STONE
- CUT STONE CORNERS
- WOOD FRAMEWORK
- TOPS OF WALLS RECENTLY PLASTERED

**BEEF ISLAND ESTATE HOUSE RUIN
BRITISH VIRGIN ISLANDS**

FOR
B. V. I. HISTORICAL SOCIETY

DATE
12/92

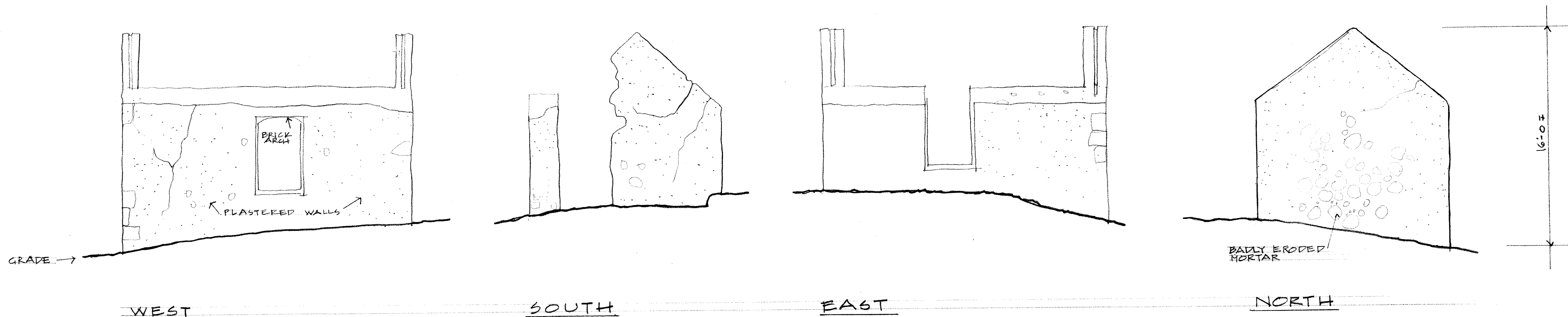
PROJECT NO.
02-92

CARIBBEAN VOLUNTEER EXPEDITIONS
BOX 388 CORNING, NY 14830
607 962 7846

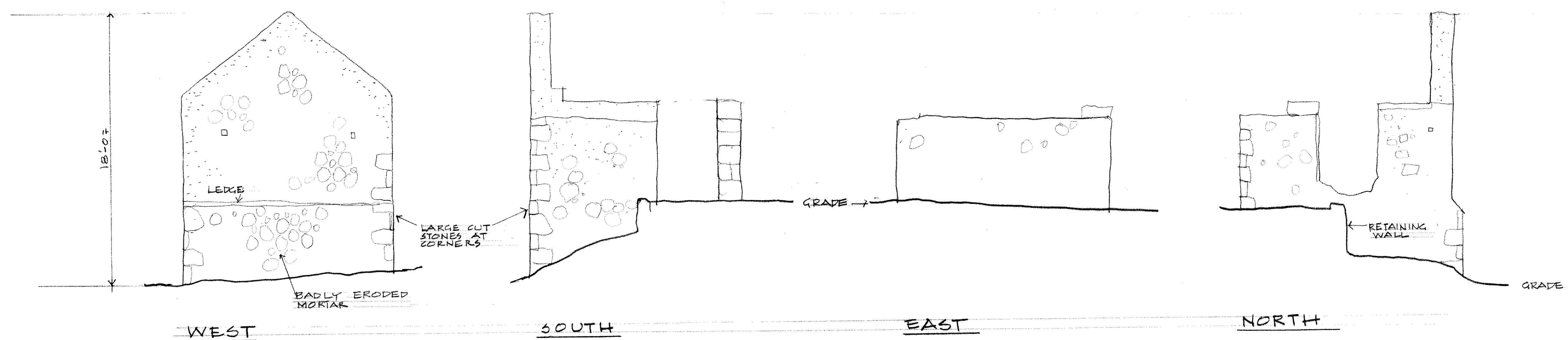
C V E

MEASURED BY
A. HERSH
DRAWN BY
A. HERSH

SHEET
2
OF 3



ELEVATIONS - OUT BUILDING
1/4" = 1'-0"



ELEVATIONS - COOK HOUSE
1/4" = 1'-0"

NOTES
RUBBLE STONE WALLS, PLASTERED.
CUT STONE CORNERS

**BEEF ISLAND ESTATE HOUSE RUIN
BRITISH VIRGIN ISLANDS**

FOR
B. V. I. HISTORICAL SOCIETY

DATE
12/92

PROJECT NO.
02-92

CARIBBEAN VOLUNTEER EXPEDITIONS
BOX 388 CORNING, NY 14830
607 962 7846

C V E

MEASURED BY
A. HERSH
DRAWN BY
A. HERSH

SHEET
3
OF
3