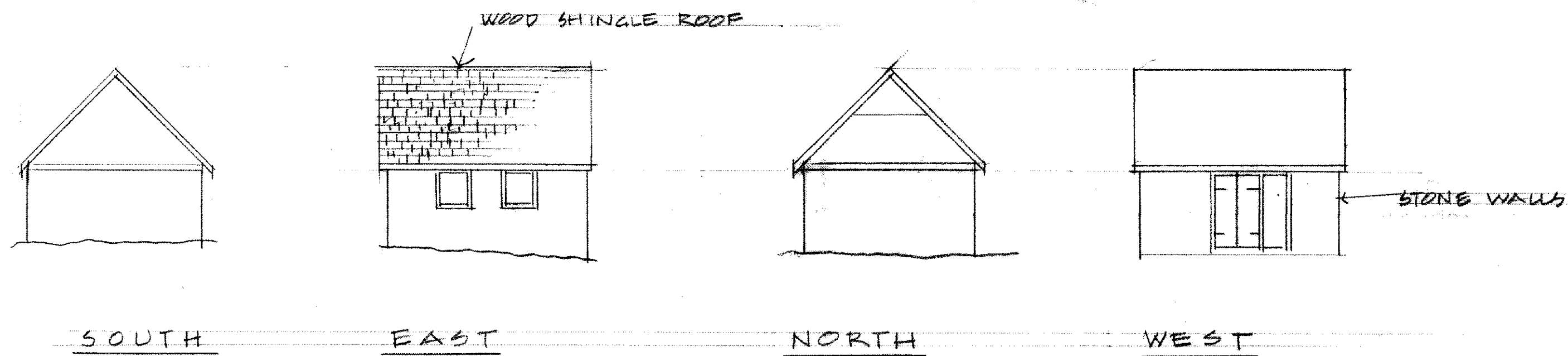
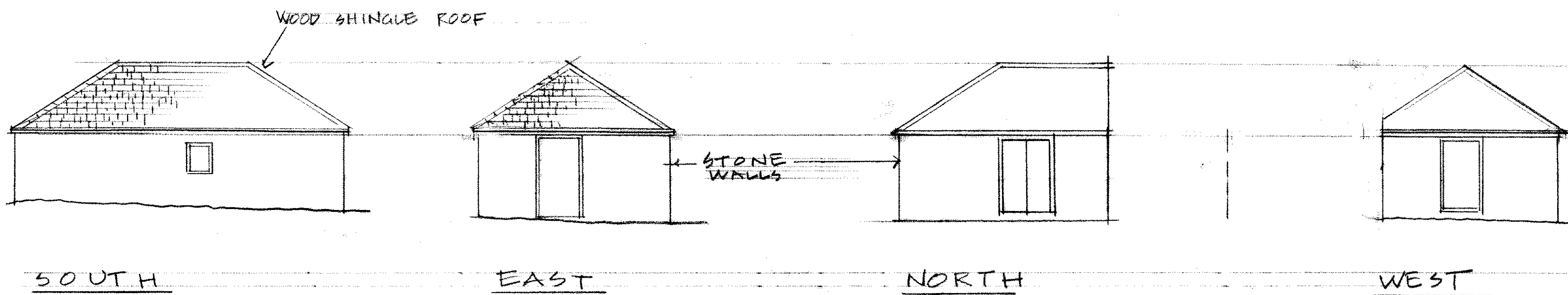


BAKERY ELEVATIONS  
SCALE 1/8" = 1'-0"



STABLE ELEVATIONS  
SCALE 1/8" = 1'-0"

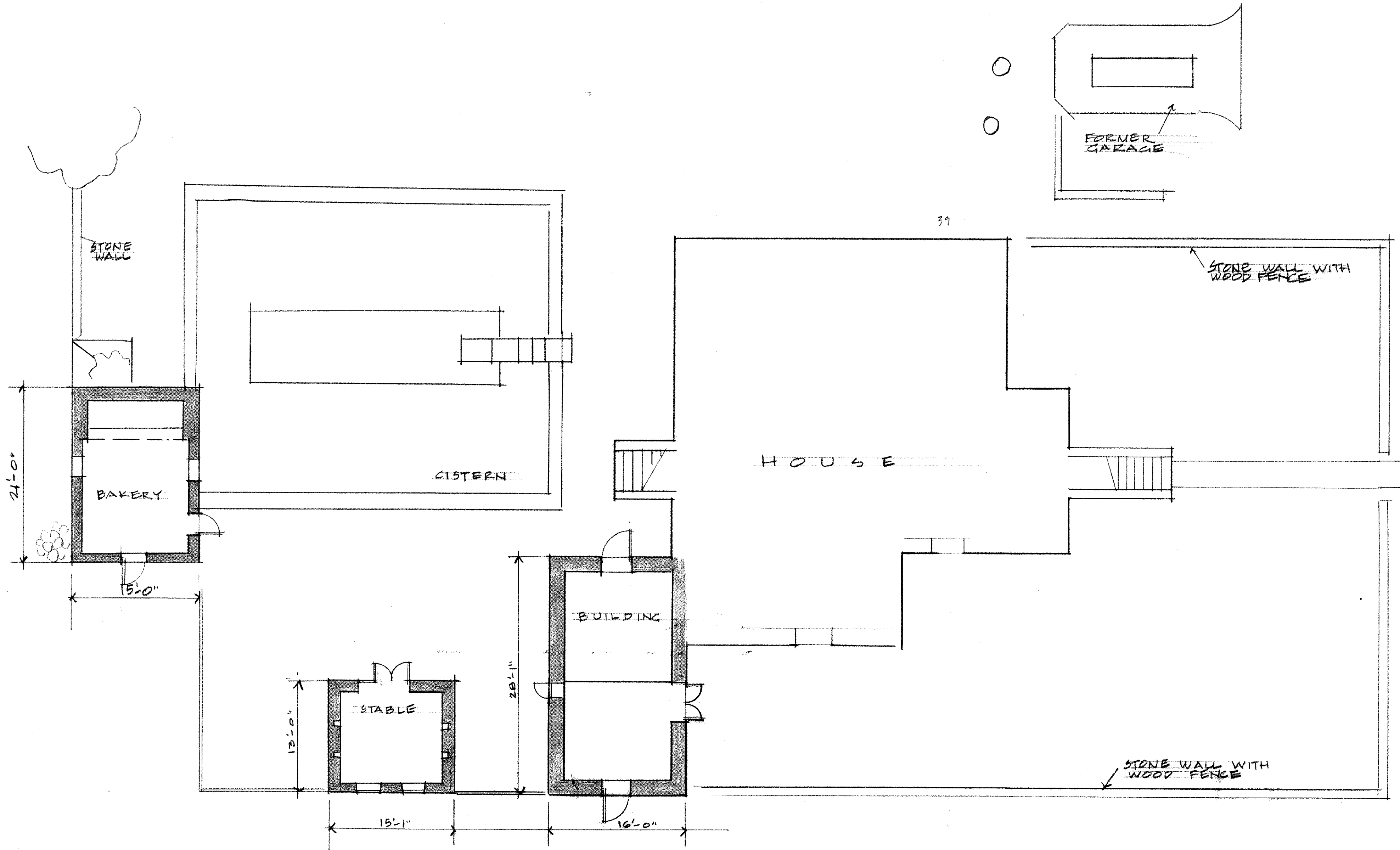


OUT BUILDING ELEVATIONS  
SCALE 1/8" = 1'-0"

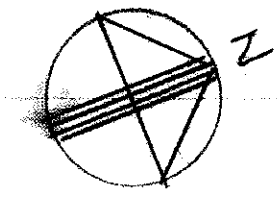
**WALL BLAKE BUILDINGS**  
ANGUILLA APRIL 1999

PREPARED BY:  
CARIBBEAN VOLUNTEER EXPEDITIONS  
BOX 388 CORNING NY 14830

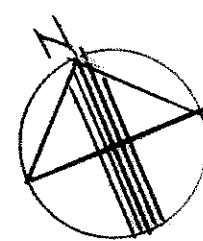
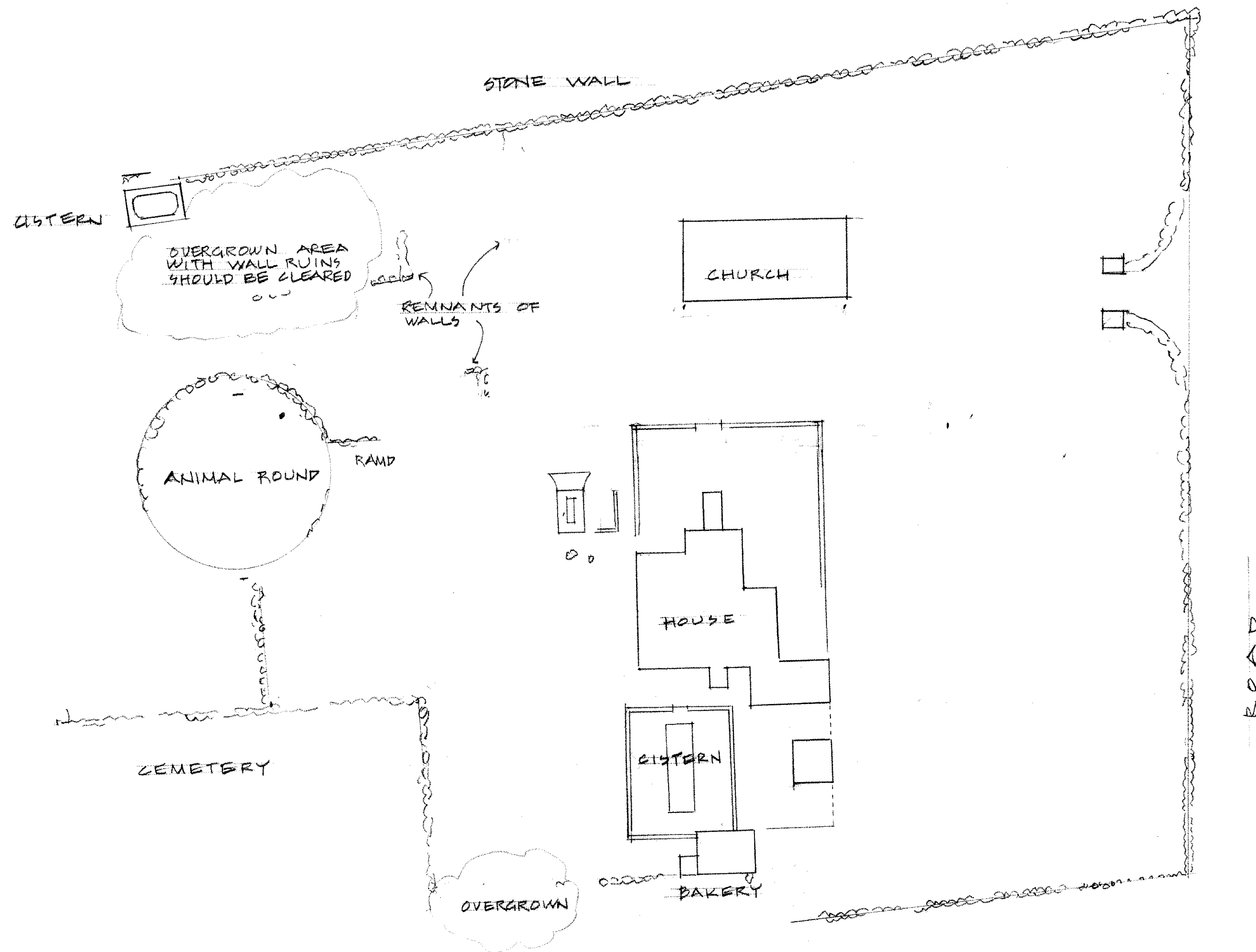
VOLUNTEERS:  
A Hersh, L Hersh, S Gordon, N Alpha, J Alpha, K Alpha, T Mestier



SITE PLAN  
 SCALE 1/8" = 1'-0"



**WALL BLAKE SITE PLAN**  
 ANGUILLA APRIL 1999  
 PREPARED BY:  
 CARIBBEAN VOLUNTEER EXPEDITIONS  
 BOX 388 CORNING NY 14830  
 VOLUNTEERS:  
 A Hersh, L Hersh, S Gordon, N Alpha, J Alpha, K Alpha, T Mestier



S I T E P L A N  
S C A L E 1" = 30'

**WALL BLAKE SITE PLAN**  
**ANGUILLA** APRIL 1999  
 PREPARED BY:  
 CARIBBEAN VOLUNTEER EXPEDITIONS  
 BOX 388 CORNING NY 14830  
 VOLUNTEERS:  
 A Hersh, L Hersh, S Gordon, N Alpha, J Alpha, K Alpha, T Mestier